




4/16 Coast Avenue Cronulla NSW

3  2  1 

Drenched in morning sunshine, this unique dual level apartment is situated directly on The Esplanade with an open ocean vista. Boasting deceptively grand proportions behind its discreet façade, this three bedroom apartment has been beautifully updated throughout and offers an unrivalled lifestyle opportunity.

- Unique dual level apartment with views enjoyed from every room
- Direct access to The Esplanade from your own back door
- Beautifully renovated Caesarstone kitchen with quality appliances
- Separate living room drenched in breathtaking ocean views & A/C

[For full version visit the website](https://www.gibsonpartners.com/lease/nsw/sutherland/cronulla/residential/apartment/8160974)

Type : Apartment

Price : \$1330 per week

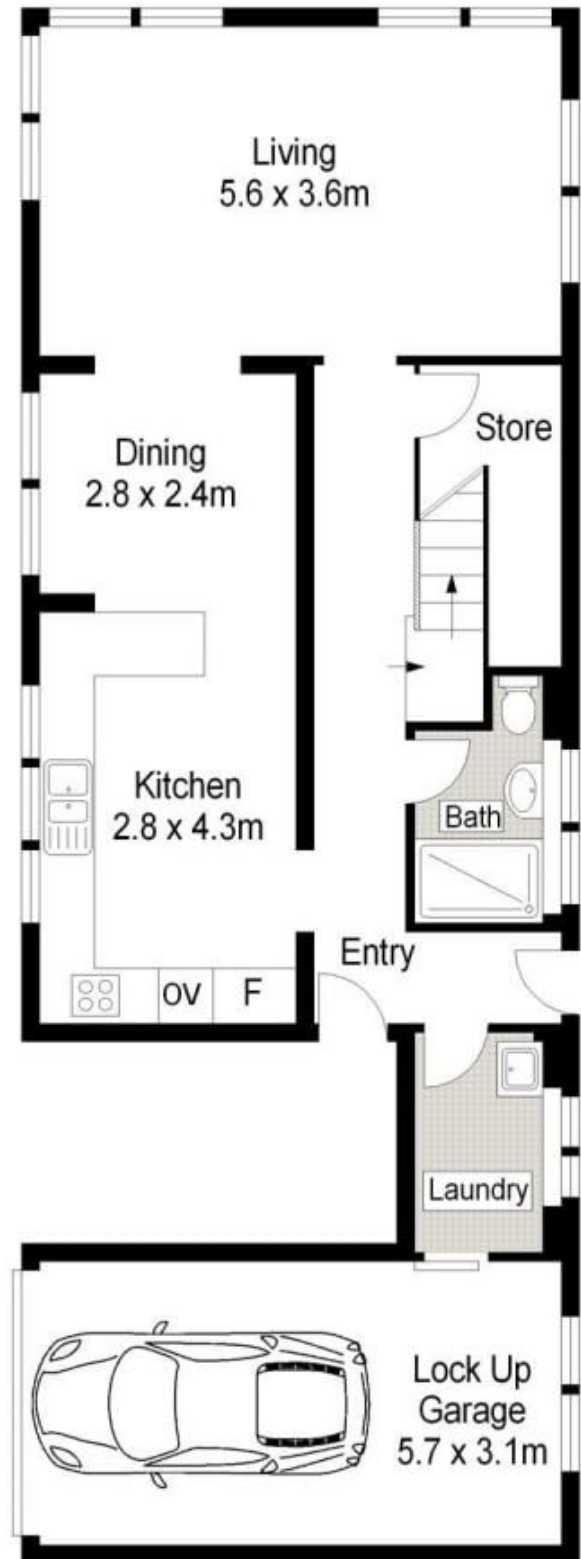
View : <https://www.gibsonpartners.com/lease/nsw/sutherland/cronulla/residential/apartment/8160974>



Chris Malliate
02 9523 1333



FIRST FLOOR



GROUND FLOOR



Gibson Partners Real Estate Pty Ltd

Scale in metres. Indicative only. Dimensions are approximate. All information contained herein is gathered from sources we believe to be reliable. However we cannot guarantee its accuracy and interested persons should rely on their own enquiries.



4/16 Coast Avenue, Cronulla South

GIBSON