



2/221 Burraneer Bay Road Caringbah South NSW

4 🛏 3 🚗 2 🚗

Opulent and architectural in its design, this brand new four-bedroom townhouse offers the ideal balance of comfort and luxury living at its finest. Immaculately presented interiors flow through a well thought out dual-level floor plan, featuring a double lock up garage and versatile paved and grassed yard perfect for indoor/outdoor living.

Positioned within a newly established boutique development in the highly sought after Caringbah South area, this unique home is also convenient to local schools, shops and transport options as well as a short commute to Cronulla's beaches.

- Flowing interiors reveal open plan living areas with high ceilings

Price : \$1400 per week

Land Size : 229 sqm

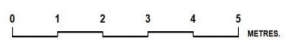
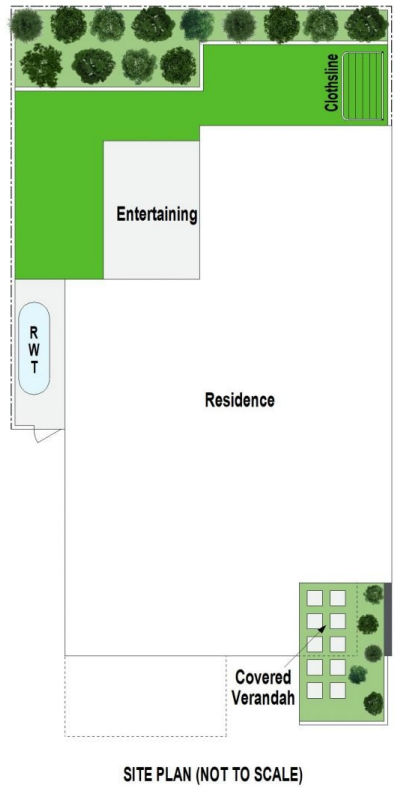
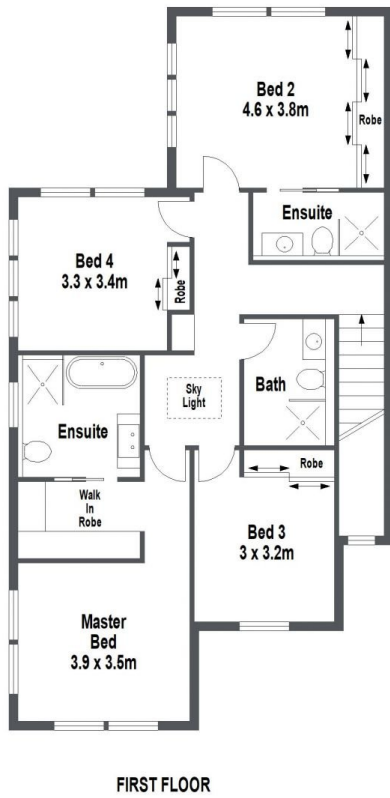
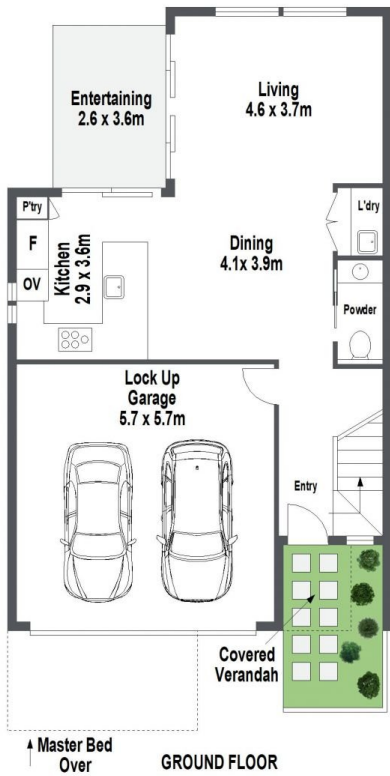
View : <https://www.gibsonpartners.com/lease/nsw/sutherland/caringbah-south/residential/townhouse/8079494>



Chris Malliate
02 9523 1333



Nicholas Di Martino
02 9523 1333



Gibson Partners Real Estate Pty Ltd

FLOOR PLAN ON DEMAND Scale in metres. Indicative only. Dimensions are approximate. All information contained herein is gathered from sources we believe to be reliable. However we cannot guarantee its accuracy and interested persons should rely on their own enquiries.

2/221 Burraneer Bay Road, Caringbah South



GIBSON