



4 Atherton Road Engadine NSW

4 3 2

Nestled within a tranquil cul-de-sac location in the heart of Engadine, this recently renovated four-bedroom family home unfolds over a functional three-level floor plan offering a lifestyle of comfort and convenience. Boasting generous living and dining areas, ample accommodation and a large back yard complete with a paved alfresco area and oversized spa, ideal for entertaining.

Occupying approx. 556.4sqm this home offers updated interiors throughout with the scope to further personalise and is the ideal opportunity for those looking for a solid foundation to raise a family in a central location convenient to local parks, ovals, shops, top quality schools and transport links.

- Spacious separate living and dining areas seamlessly

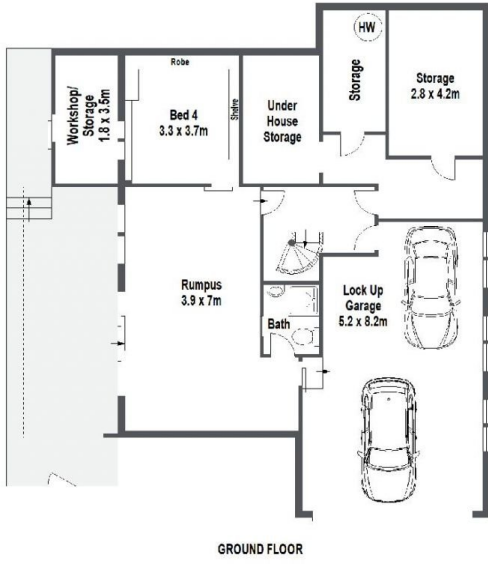
Price : Auction (Unless Sold Prior)
Land Size : 556.4 sqm
View : <https://www.gibsonpartners.com/sale/nsw/sutherland/engadine/residential/house/8046267>



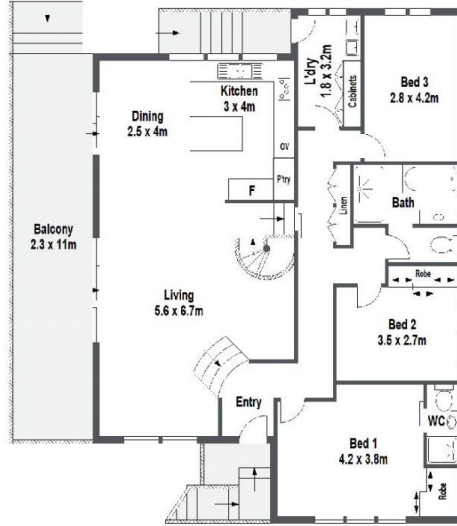
Adam Wilkinson
02 9523 1333



Chris Walsh
02 9523 1333



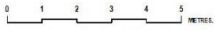
GROUND FLOOR



FIRST FLOOR



SITE PLAN (NOT TO SCALE)



Gibson Partners Real Estate Pty Ltd

FLOOR PLAN Scale in metres, indicative only. Dimensions are approximate. All information contained herein is gathered from sources we believe to be reliable, however we cannot guarantee its accuracy and interested persons should rely on their own enquiries.

4 Atherton Road, Engadine



GIBSON