



105/46-48 President Avenue Caringbah NSW

2 1 1

Ideal as a first home or a smart investment, this elegantly designed first-floor apartment is bathed in natural light and located at the rear of the block. It features a stylish open-plan layout with spacious interiors that extend to a generous entertainer's balcony, offering views of Caringbah Oval and the surrounding playing fields.

View : <https://www.gibsonpartners.com/sale/nsw/sutherland/caringbah/residential/apartment/8019757>

Conveniently situated just a short walk from village shops, vibrant eateries, and public transport, this contemporary apartment presents a great opportunity.

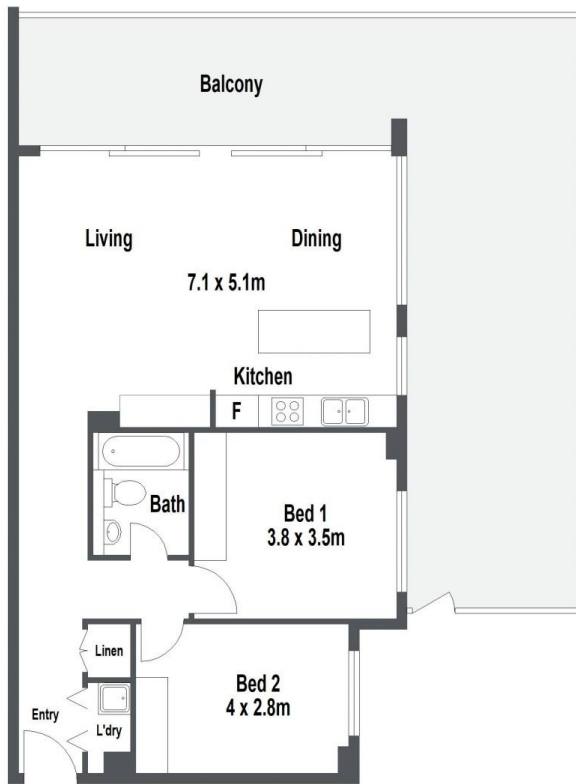
- Wrap around entertainer's balcony with oval outlook
- Spacious open plan interiors flooded in natural light
- Island kitchen with stone benches and gas cook-top
- Two spacious bedrooms feature built-in wardrobes
- Ducted air-conditioning and security video intercom



Ivan Lampret
02 9523 1333



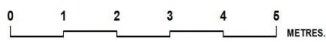
Karla Madgwick
02 9523 1333



Storage
3m²



BASEMENT 2



Gibson Partners Real Estate Pty Ltd

FLOOR PLAN ON DEMAND Scale in metres. Indicative only. Dimensions are approximate. All information contained herein is gathered from sources we believe to be reliable. However we cannot guarantee its accuracy and interested persons should rely on their own enquiries.

105/46-48 President Avenue, Caringbah



GIBSON