



### 3 Dents Place Gymea Bay NSW

4 2 2

Boasting strong bones and impressive proportions, this solid double brick residence presents the opportunity to personalise and add value. Currently a neatly presented 4 bedroom family home with spacious living spaces, fabulous rear yard and potential rumpus/in-law accommodation downstairs.

**Price** : \$ 1,400,000

**Land Size** : 575 sqm

**View** : <https://www.gibsonpartners.com/sale/nsw/utherland/gymea-bay/residential/house/7217745>

Exceptionally positioned in a highly desired cul-de-sac with dual street frontage and leafy outlook, the home is also convenient to parks, shops, train station and within the Gymea Bay Public School and Kirrawee High catchment area.

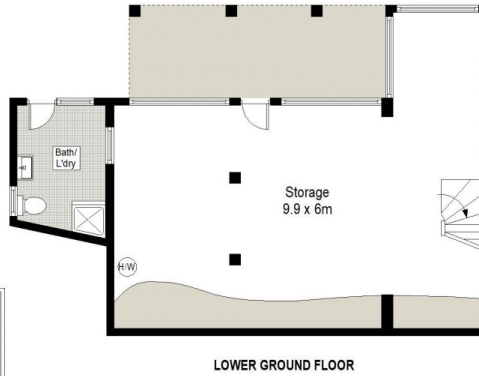
- Unique design with impressive proportions and light filled interiors
- Spacious lounge and dining areas flow freely to the



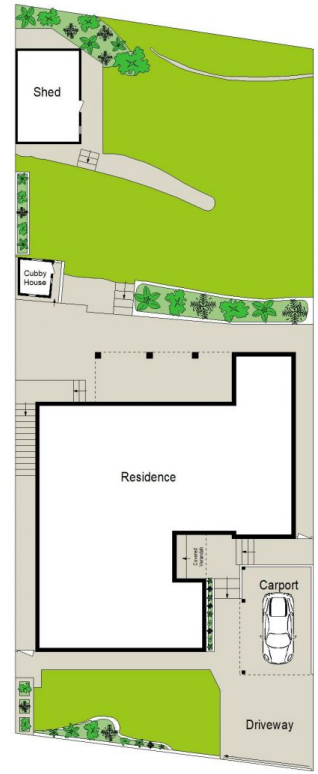
**Chris Walsh**  
02 9523 1333



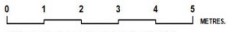
GROUND FLOOR



LOWER GROUND FLOOR



SITE PLAN (NOT TO SCALE)



Gibson Partners Real Estate Pty Ltd



Scale in metres. Indicative only. Dimensions are approximate. All information contained herein is gathered from sources we believe to be reliable. However we cannot guarantee its accuracy and interested persons should rely on their own enquiries.



3 Dents Place, Gymea Bay

**GIBSON**