

1 Lunar Avenue Heathcote NSW

4 2 4

This charming Hamptons inspired single level home leaves nothing for you to do but relish in the magical sunsets enjoyed from its elevated position. Bathed in natural light, the home's freshly presented interiors bring together high end finishes and a modern floorplan seamlessly connecting the kitchen, living area and outdoor entertaining space making it the ideal setting for friend and family gatherings.

Located in a tranquil cul-de-sac setting capturing scenic views of Heathcote National Park and within close proximity to local shops, schools and transport, this is a move-straight-in opportunity of great style, versatility and convenience.

- Elevated position boasts Heathcote National Park views and magical sunsets

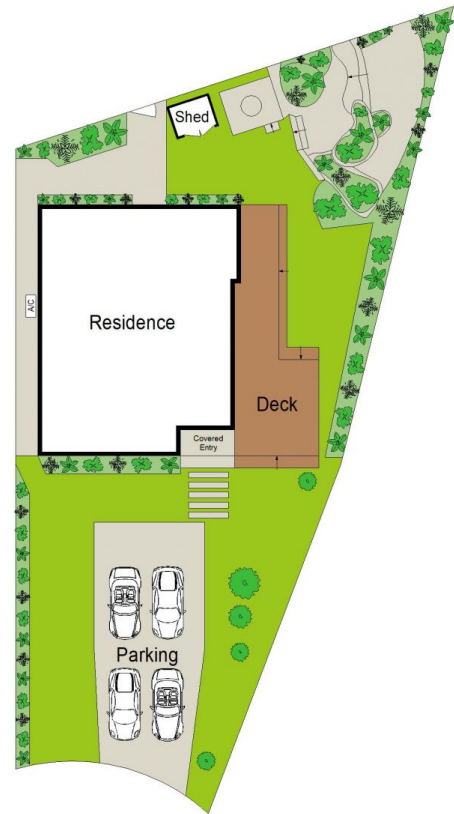
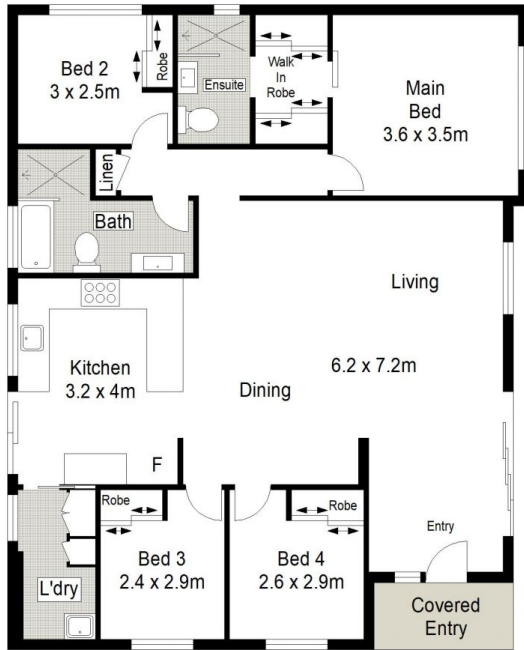
Land Size : 567.7 sqm
View : <https://www.gibsonpartners.com/sale/nsw/sutherland/heathcote/residential/house/6966955>



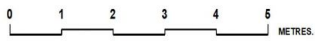
Ivan Lampret
02 9523 1333



Farrah Tidmarsh
02 9523 1333



SITE PLAN (NOT TO SCALE)



Gibson Partners Real Estate Pty Ltd

G Scale in metres. Indicative only. Dimensions are approximate. All information contained herein is gathered from sources we believe to be reliable. However we cannot guarantee its accuracy and interested persons should rely on their own enquiries.



1 Lunar Avenue, Heathcote

GIBSON