



51 Saunders Bay Road Caringbah South NSW

4 3 4

This single level family home may seem quite modest from the street but step within and you will discover an impressive single level floorplan that utilises space and natural light to perfection. Providing abundant accommodation, the home is designed for easy indoor/outdoor entertaining further enhanced by a choice of versatile living spaces, resort-style inground pool and spa basking in north-western sunshine.

Adding to the picture is the impressive 1372sqm parcel of level land upon which the home rests. Zoned R2 for low density residential with approx. 21.33m frontage, this rare offering also lends itself to the potential for subdivision or re-development (STCA).

Positioned nearby local waterways, within 700m to

Land Size : 1372 sqm

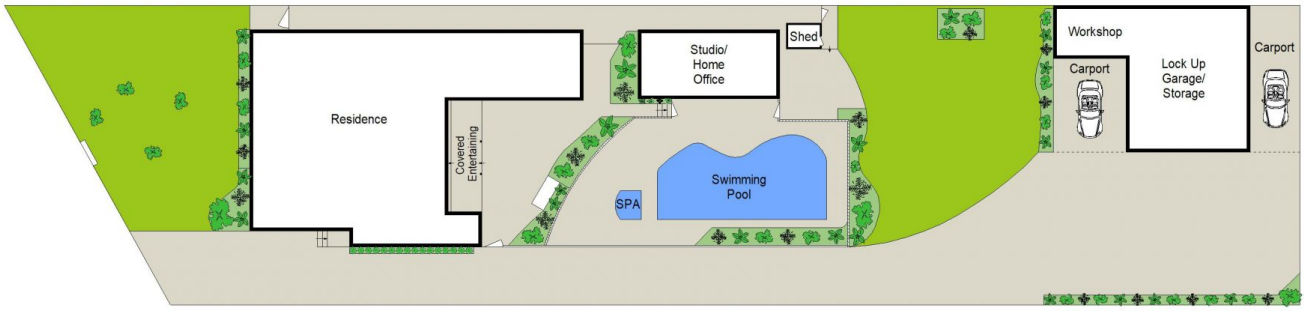
View : <https://www.gibsonpartners.com/sale/nsw/sutherland/caringbah-south/residential/house/6926075>



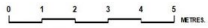
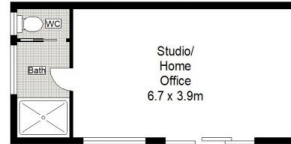
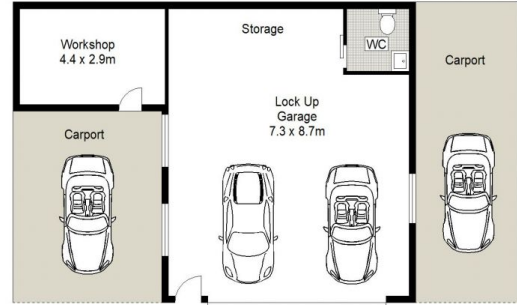
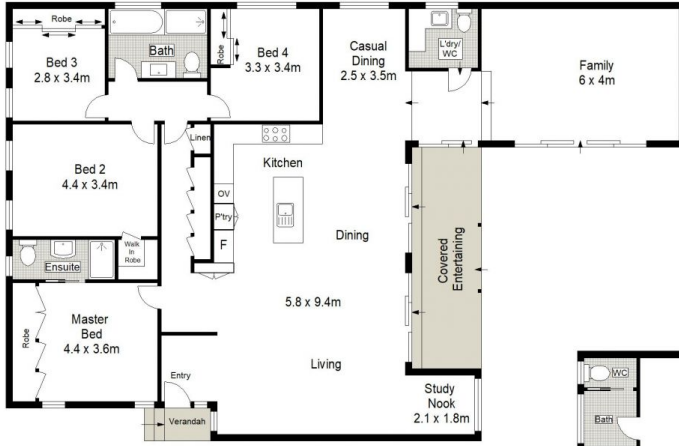
Ivan Lampret
02 9523 1333



Karla Madgwick
02 9523 1333



SITE PLAN (NOT TO SCALE)



Gibson Partners Real Estate Pty Ltd

Scale in metres. Indicative only. Dimensions are approximate. All information contained herein is gathered from sources we believe to be reliable. However we cannot guarantee its accuracy and interested persons should rely on their own enquiries.



51 Saunders Bay Road, Caringbah South

GIBSON