



40 Crescent Road Caringbah South NSW

4 3 2

Set on a generous 771.4sqm parcel of land, this solid family home blends charming period detail and graceful interiors to create a choice of formal and informal living areas and effortless flow to the covered entertaining, pool and garden lover's rear yard.

Land Size : 771.4 sqm

View : <https://www.gibsonpartners.com/sale/nsw/sutherland/caringbah-south/residential/house/6907189>

Radiating character and warmth from the high ornate ceilings, decorative lead light windows and solid timber flooring, this delightful home provides a welcoming haven for growing families demanding space in a sought-after locale convenient to everyday essentials of local schools, sporting fields, waterways, village shops and transport.

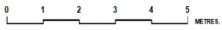
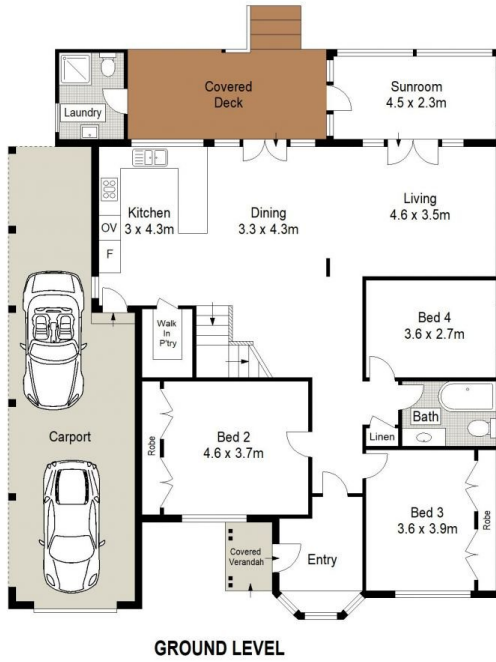
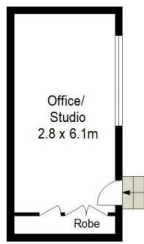
- Graceful open plan interiors flow to covered entertaining deck
- Spacious timber kitchen with walk-in pantry & breakfast



Ivan Lampret
02 9523 1333



Karla Madgwick
02 9523 1333



Gibson Partners Real Estate Pty Ltd

Scale in metres. Indicative only. Dimensions are approximate. All information contained herein is gathered from sources we believe to be reliable. However we cannot guarantee its accuracy and interested persons should rely on their own enquiries.



40 Crescent Road, Caringbah South

GIBSON