



3/272-276 Kingsway Caringbah NSW

4 2 1

Perfectly suited to a young family or downsizer, this unique split-level townhouse is situated at the front of a small complex of only nine and offers 4 spacious bedrooms. Enjoying a sunny north aspect, the interiors are light-filled and welcoming with high ceilings and a seamless flow out onto a private entertaining courtyard.

View : <https://www.gibsonpartners.com/sale/nsw/sutherland/caringbah/residential/townhouse/6838178>

Conveniently located to a selection of Caringbah amenities including local schools, parks, ovals, train station, shops, cafes and restaurants.

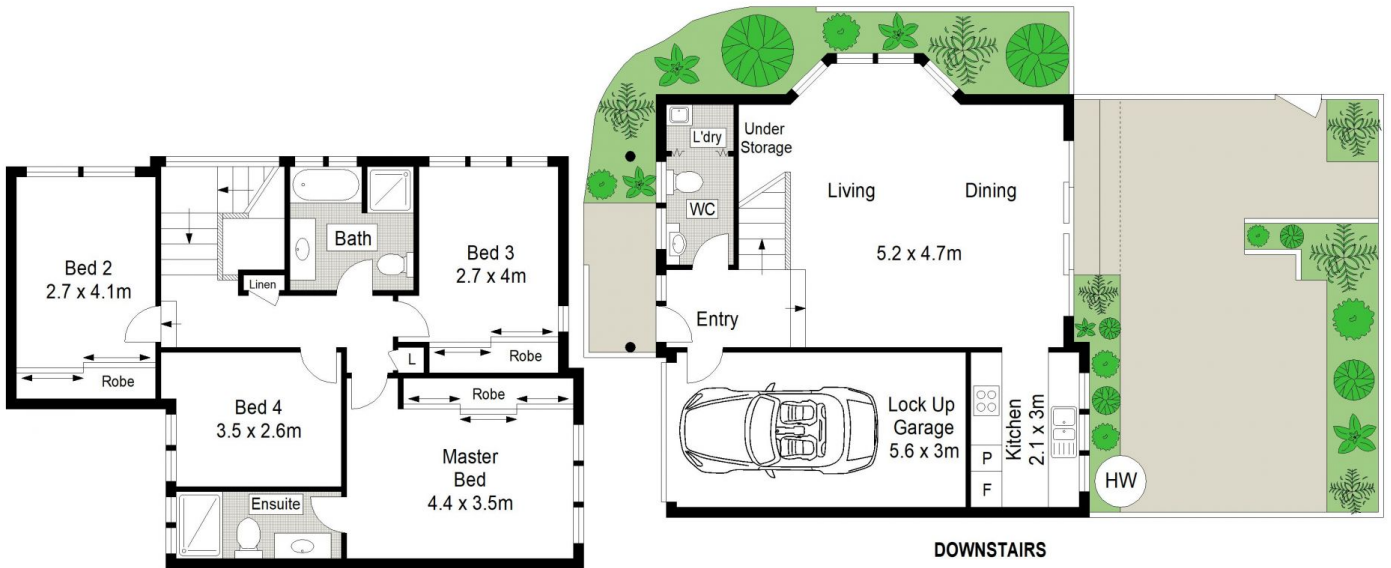


Ivan Lampret
02 9523 1333



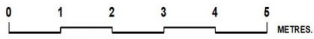
Farrah Tidmarsh
02 9523 1333

- ? Perfectly appointed for easy care indoor/outdoor living
- ? Generous light-filled lounge/dining area with high ceilings
- 4 good size bedrooms, 3 with BIRs & main with ensuite
- ? Spacious kitchen, internal laundry and WC downstairs
- Secure and private rear courtyard ideal for entertaining



LEVEL ONE

DOWNSTAIRS



Gibson Partners Real Estate Pty Ltd



Scale in metres. Indicative only. Dimensions are approximate. All information contained herein is gathered from sources we believe to be reliable. However we cannot guarantee its accuracy and interested persons should rely on their own enquiries.



3/272-276 Kingsway, Caringbah

GIBSON