



## 78 Bligh Street Kirrawee NSW

3 2 8

Peacefully positioned in a tranquil leafy pocket with dual street access, this expansive home set high amongst the trees boasts an impressive 992.7sqm parcel of land and a floorplan that utilises the space and aspect to perfection capturing an abundance of natural light and a picturesque outlook.

Perfect for the growing family, this multi-level home offers a functional lower level suitable for a 4th bedroom, home office, teenagers or guest accommodation.

Located in the Kirrawee Public & High School catchments and a short 2.5km drive to a choice of shops and dining delights of the new South Village in Kirrawee and just metres to lovely bushwalks.

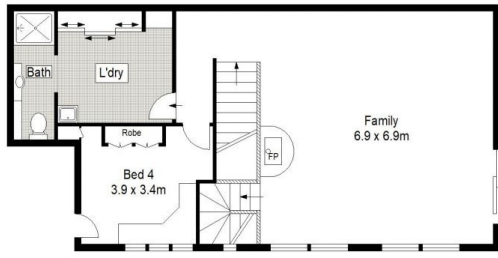
**Price** : \$ 1,661,000

**Land Size** : 992.7 sqm

**View** : <https://www.gibsonpartners.com/sale/nsw/utherland/kirrawee/residential/house/6685857>



**Chris Walsh**  
02 9523 1333



0 1 2 3 4 5 METRES

Gibson Partners Real Estate Pty Ltd

Scale in metres. Indicative only. Dimensions are approximate. All information contained herein is gathered from sources we believe to be reliable. However we cannot guarantee its accuracy and interested persons should rely on their own enquiries.

GROUND FLOOR

SITE PLAN (NOT TO SCALE)



78 Bligh Street, Kirrawee

**GIBSON**