

108/128 Willarong Road Caringbah NSW

2 2 1

A beacon of modern interior design this stylish apartment is situated on the first floor of The Madison providing clean lines, premium finishes and impressive proportions throughout. The open-plan living area is bright and airy with large windows and sliding doors creating superb indoor-outdoor flow to an expansive covered entertainer's balcony.

Situated within a security building with lift access and moments to a selection of shops, eateries and Caringbah Station whilst only a short drive to Cronulla Beach and Miranda Westfield.

- First floor position, impressive proportions, naturally light filled
- ? Marble kitchen with European appliances & gas cooktop

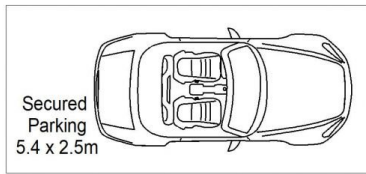
View : <https://www.gibsonpartners.com/sale/nsw/sutherland/caringbah/residential/apartment/6382482>



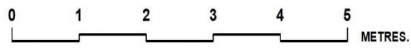
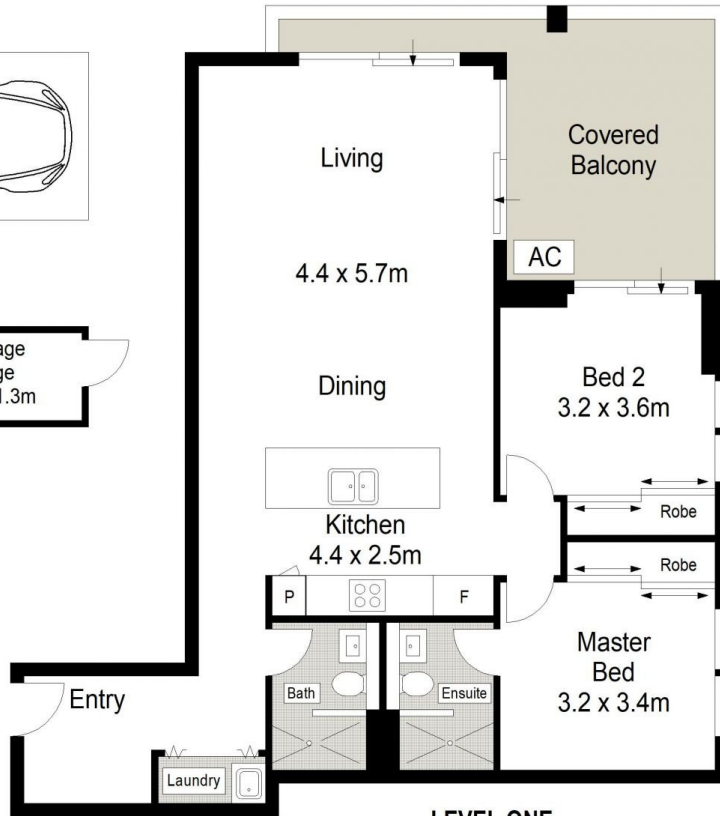
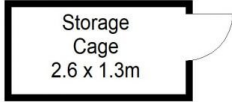
Ivan Lampret
02 9523 1333



Farrah Tidmarsh
02 9523 1333



BASEMENT



Gibson Partners Real Estate Pty Ltd

Scale in metres. Indicative only. Dimensions are approximate. All information contained herein is gathered from sources we believe to be reliable. However we cannot guarantee its accuracy and interested persons should rely on their own enquiries.



108/128 Willarong Road, Caringbah

GIBSON