



## 313/2 Dune Walk Woolooware NSW

1 1 1

Situated on the 3rd floor of the iconic Woolooware Bay development, this luxury 1 bedroom apartment with additional study/nursery space, is perfect for those looking to enter the market in style or secure a high end investment.

**Price** : \$ 575,000

**View** : <https://www.gibsonpartners.com/sale/nsw/sutherland/woolooware/residential/apartment/5855196>

Enhancing the quality of living and convenience is the proximity to Cronulla's beaches and the resort style facilities on offer including a luxurious gym, indoor lap pool, spa, steam room, rooftop theatre and BBQ entertaining terrace.

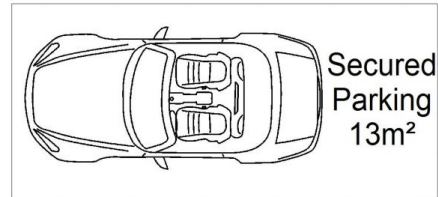
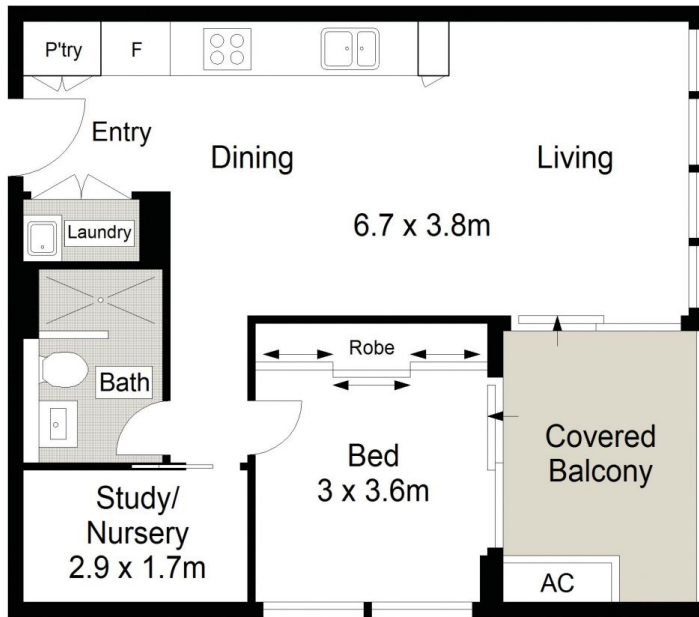
- Well-appointed light filled interiors flow to generous balcony  
? Sleek Caesarstone kitchen with Bosch appliances & gas cook-top



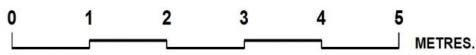
**Ivan Lampret**  
02 9523 1333



**Farrah Tidmarsh**  
02 9523 1333



**LEVEL THREE**



Gibson Partners Real Estate Pty Ltd  
 Scale in metres. Indicative only. Dimensions are approximate. All information contained herein is gathered from sources we believe to be reliable. However we cannot guarantee its accuracy and interested persons should rely on their own enquiries.



313/2 Dune Walk, Woollooware

**GIBSON**