



11/24 Parramatta Street Cronulla NSW

2  1  1 

If you are looking for a fixer upper, then this 2 bedroom apartment situated on the 2nd floor of the well renowned 'Chelsea' building presents the perfect blank canvas. In desperate need of repair yet oozing with outstanding future potential, this is a rare and valuable opportunity for both the investor or home buyer.

Currently offering lift access, generous decked balcony, private leafy outlook and security basement parking, the apartment also promotes an exceptional lifestyle opportunity with its close proximity to Blackwoods Beach, The Esplanade, rock pools, beaches, parks, Gunnamatta Bay, local shops, Cronulla Mall and transport.

- Positioned on level 2 with lift access & private leafy outlook

Price : \$ 771,000

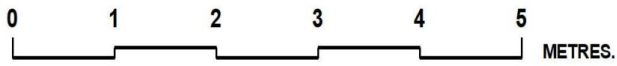
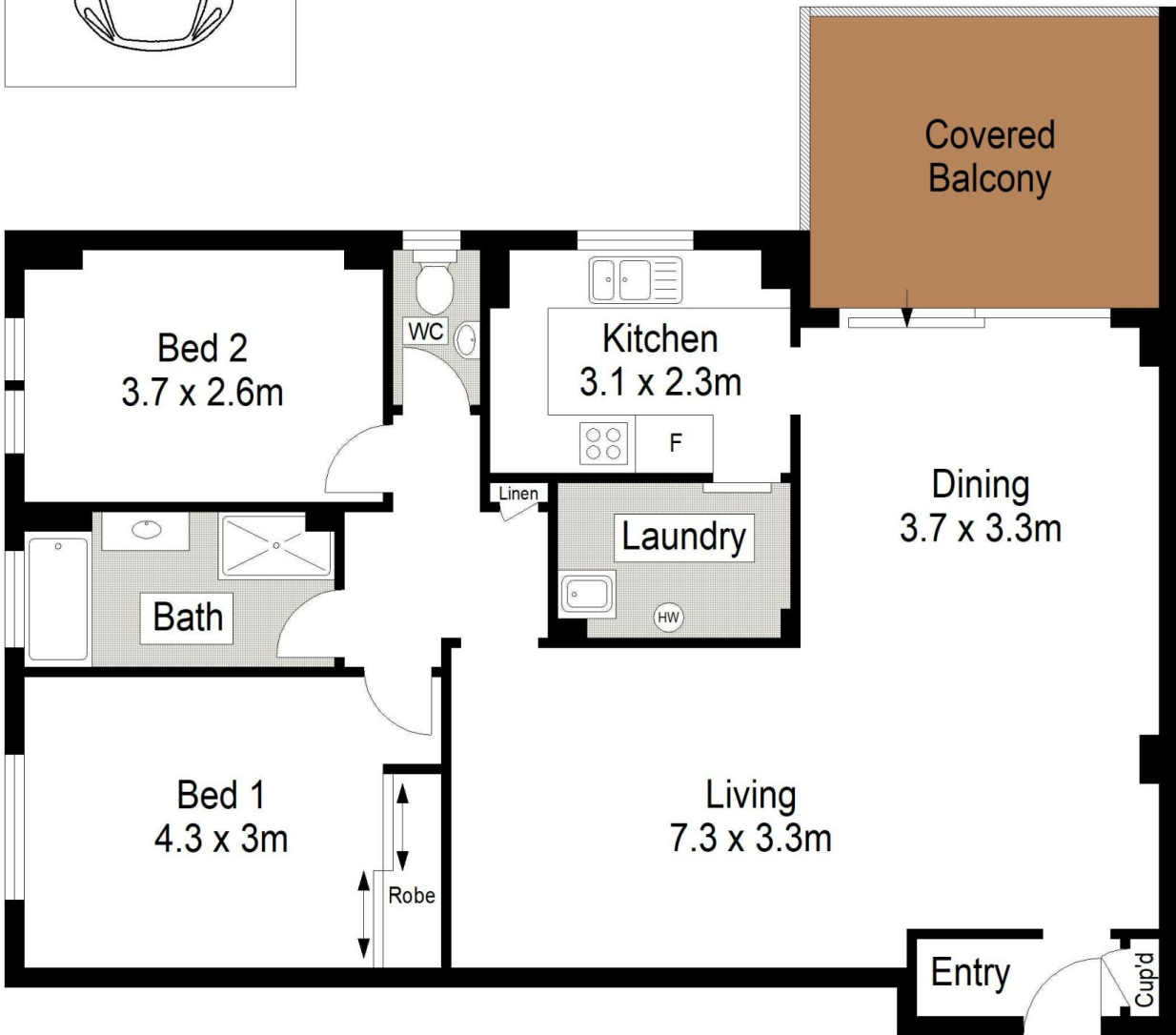
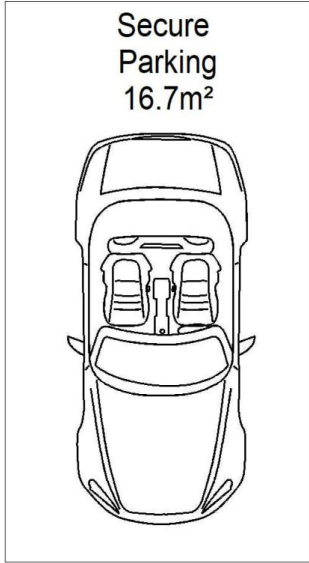
View : <https://www.gibsonpartners.com/sale/nsw/sutherland/cronulla/residential/apartment/5855067>



Ivan Lampret
02 9523 1333



Karla Madgwick
02 9523 1333



Gibson Partners Real Estate Pty Ltd

Scale in metres. Indicative only. Dimensions are approximate. All information contained herein is gathered from sources we believe to be reliable. However we cannot guarantee its accuracy and interested persons should rely on their own enquiries.



11/24 Parramatta Street, Cronulla South

GIBSON