



2/3-9 Madeira Street Sylvania NSW

3 2 2

Offering an easycare lifestyle, this unique townhouse hidden away in a gated boutique collection of private terrace-style homes perched on the fringe of the Georges River and boasting stunning water views from a resort style common area featuring a sparkling in-ground pool and gardens.

Enjoying open-plan contemporary interiors with the whole ground floor dedicated to living and dining space that flows seamlessly to the outdoor terrace making it the ideal entertainer. A private sanctuary within minutes to an abundance of local amenities, including Southgate shopping & transport.

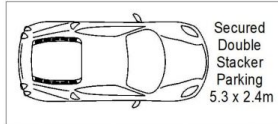
- Fluid open plan layout offers lounge and dining flexibility
- Kitchen with stone island bench, s/s appliances &

Price : \$ 905,000

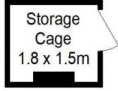
View : <https://www.gibsonpartners.com/sale/nsw/sutherland/sylvania/residential/townhouse/5854955>



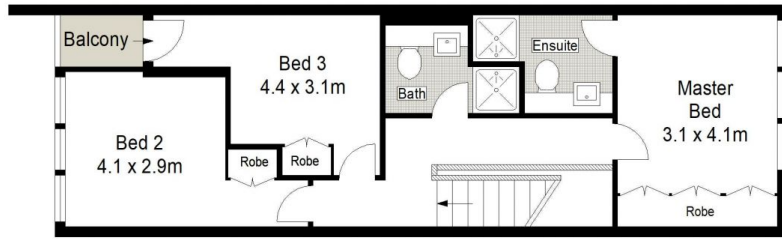
Chris Walsh
02 9523 1333



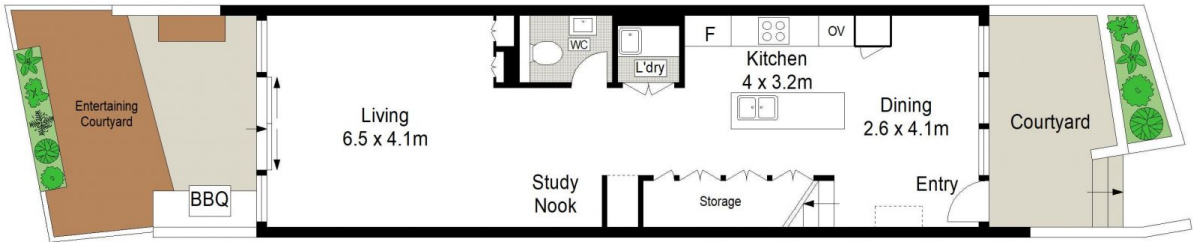
Secured Double Stacker Parking
5.3 x 2.4m



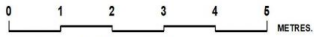
Storage Cage
1.8 x 1.5m



FIRST FLOOR



GROUND FLOOR



Gibson Partners Real Estate Pty Ltd

Scale in metres. Indicative only. Dimensions are approximate. All information contained herein is gathered from sources we believe to be reliable. However we cannot guarantee its accuracy and interested persons should rely on their own enquiries.



2/3 Madeira Street, Sylvania

GIBSON