



## 10/40-42 Yathong Road Caringbah NSW

3 1 1

Perfectly appointed at the rear of an immaculately maintained complex amid manicured gardens this recently refreshed over 55s villa is perfect for downsizers seeking convenience and ease of living.

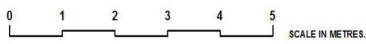
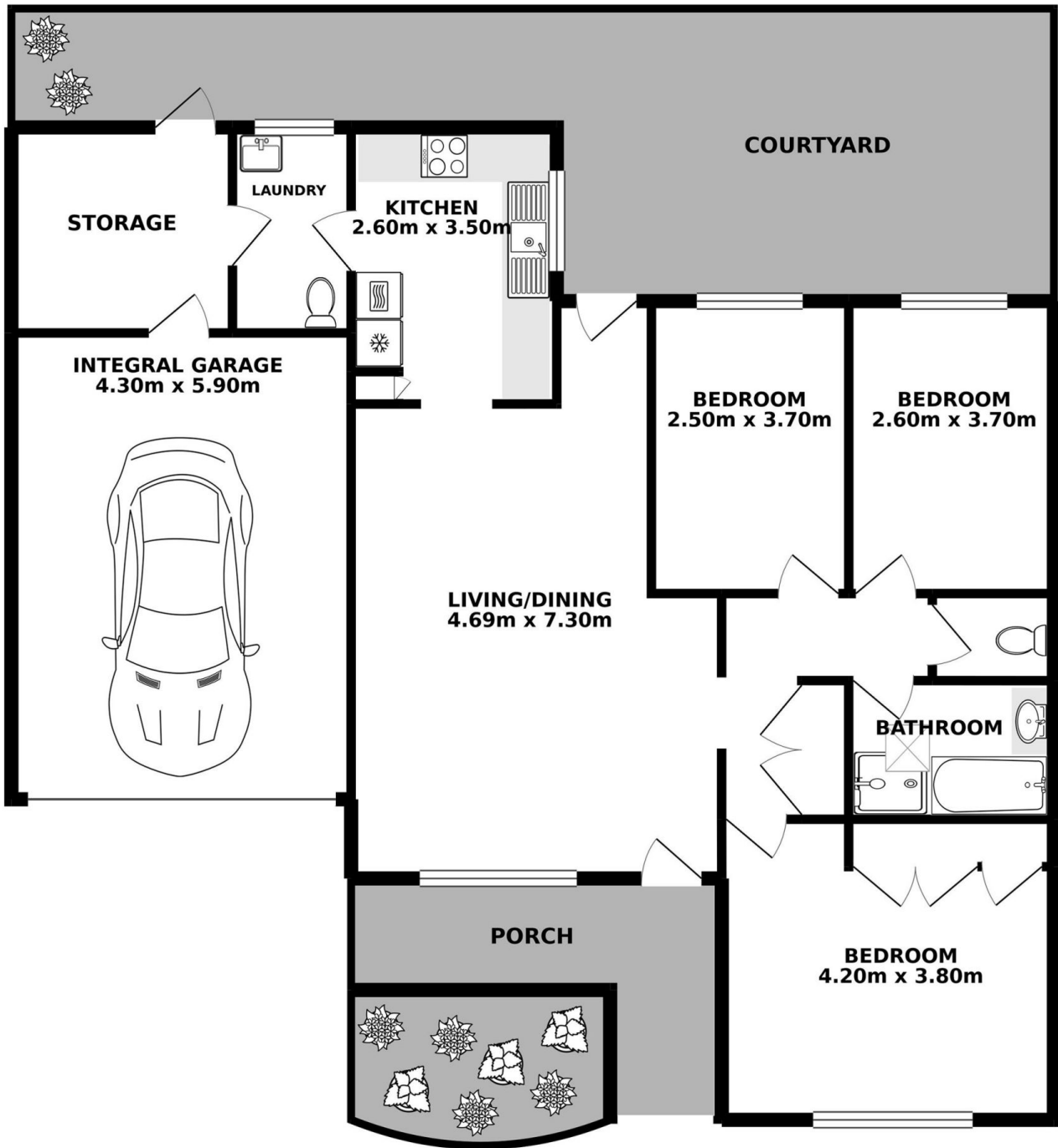
**View** : <https://www.gibsonpartners.com/sale/nsw/sutherland/caringbah/residential/villa/5854947>

Set in a quiet tree lined street, and delivering carefree living, this delightful villa home offers spacious interiors that are beautifully presented and simple to maintain. Within close proximity to Caringbah station and shopping precinct.

- Freshly painted & carpeted interiors
- Open-plan living & dining room with A/C
- Neat timber kitchen overlooks courtyard
- 3 bedrooms, master with built-in wardrobe
- Bathroom with separate bath & shower
- Sun-splashed low maintenance courtyard



**Denise Howell**  
02 9523 1333



Gibson Partners Real Estate Pty Ltd

Scale in metres. Indicative only. Dimensions are approximate. All information contained herein is gathered from sources we believe to be reliable. However we cannot guarantee its accuracy and interested persons should rely on their own enquiries.



10/40-42 Yathong Road, Caringbah

**GIBSON**