



## 52 Saunders Bay Road CARINGBAH SOUTH NSW

5 3 2

Backing onto Wattle Bush Reserve and currently consisting of a solid, two storey brick home with 5 bedrooms, generous interiors, 2 living areas and a glorious north facing rear yard with inground pool, this unique offering provides an exciting opportunity home buyers, renovators, builders and developers

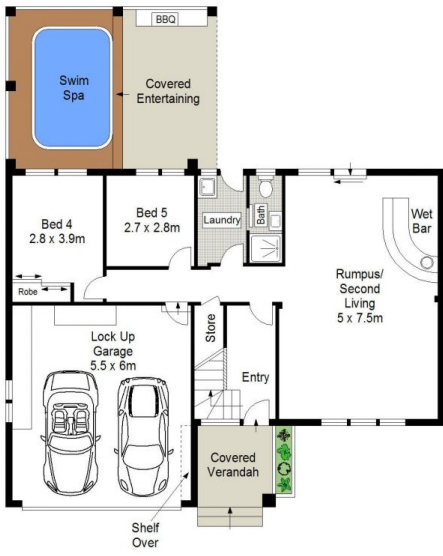
- Generous block of approximately 857sqm (17.68m x 48.46m)
- Elevated leafy outlook with north facing rear yard & inground pool
- Large open plan timber kitchen with stainless steel appliances
- 2 generous living areas, ducted & split system A/C, gas heating
- Paved entertaining area, internal access to double lock up

**Land Size** : 857 sqm

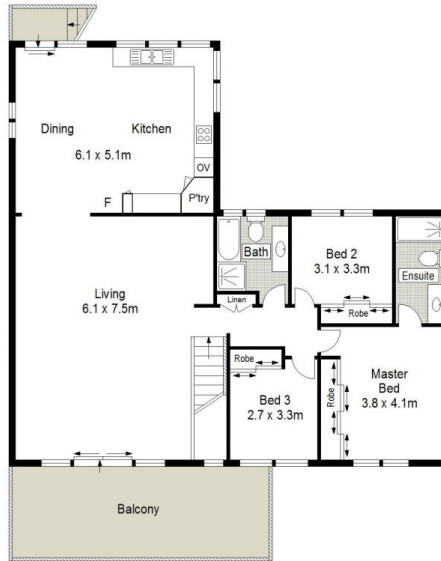
**View** : <https://www.gibsonpartners.com/sale/nsw/sutherland/caringbah-south/residential/house/5854910>



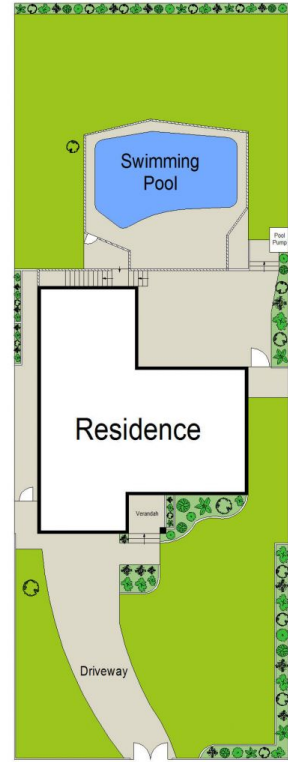
**Denise Howell**  
02 9523 1333



GROUND FLOOR



FIRST FLOOR



SITE PLAN (NOT TO SCALE)



0 1 2 3 4 5 SCALE IN METRES

Gibson Partners Real Estate Pty Ltd

Scale in metres. Indicative only. Dimensions are approximate. All information contained herein is gathered from sources we believe to be reliable. However we cannot guarantee its accuracy and interested persons should rely on their own enquiries.

52 Saunders Bay Road, Caringbah South