



**51/113-115 Karimbla Road MIRANDA NSW**

Lifestyle - perfectly positioned and only a short stroll to westfield and the train station

Accommodation - 3 bedrooms, spacious layout, 2 level apartment

Features - garage and well maintained security block

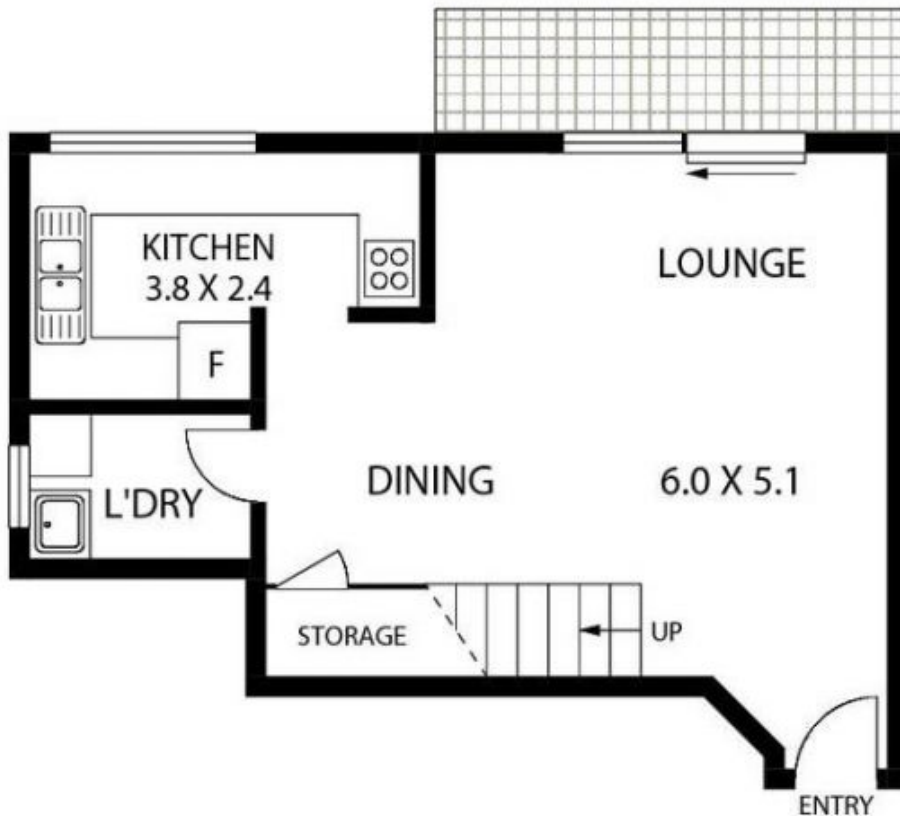
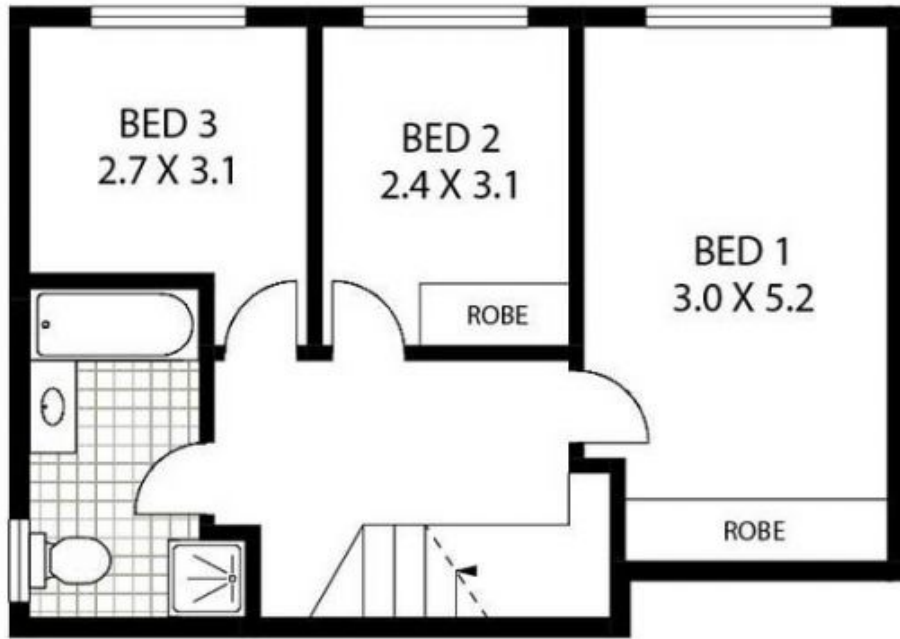
Currently tenanted

3  1  1 

**View** : <https://www.gibsonpartners.com/sale/nsw/sutherland/miranda/residential/unit/5854862>



**Denise Howell**  
02 9523 1333



51/113-125 KARIMBLA ROAD

MIRANDA

**Floor Plan Disclaimer:** Mind the Gap (mtg) floor plans / site plans are intended as an approximate guide only. No representations or warranties of any nature are given or intended and any person using this information other than as a guide should always rely on their own enquiries. Mind the Gap property marketing services / 1300 133 145 / Photography, Floor plans, Copywriting, Video, Online, Design / www.mindthegap.com.au