



**29/37 Gerrale Street CRONULLA NSW**

2 1 1

Lifestyle - situated on the top floor within the heart of Cronulla and only moments to south Cronulla beach

accommodation - 2 bedrooms

Features - security block, sunny westerly aspect and lock up garage

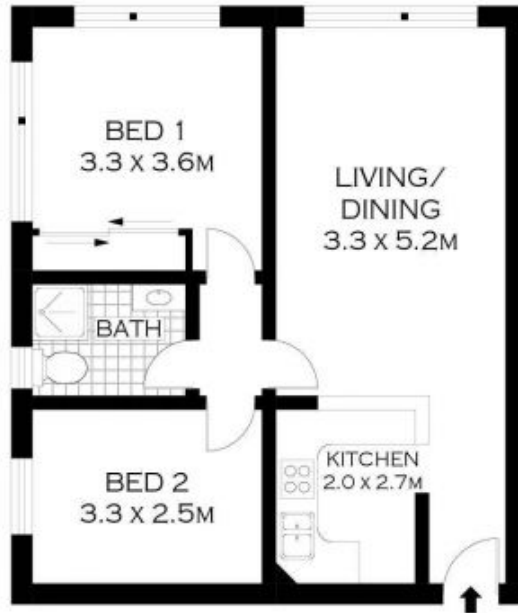
Council rates \$236.70 per quarter (approx)  
Quarterly fees \$831.05 per quarter (approx)

**Price** : \$ 565,500

**View** : <https://www.gibsonpartners.com/sale/nsw/sutherland/cronulla/residential/unit/5854854>



**Denise Howell**  
02 9523 1333



PLANS SHOWN ONLY INDICATIVE OF LAYOUT. DIMENSIONS ARE APPROXIMATE.  
Floor plans by [www.cronullabelle.com](http://www.cronullabelle.com)  
Ref. No. 0090



**belle**  
PROPERTY

29/37 GERRALE STREET

CRONULLA