



9/123-125 Gerrale Street CRONULLA NSW

2 2 2

Lifestyle - enjoy a fabulous lifestyle just metres from south cronulla surfing beach and the esplanades cafe lifestyle , stylish and sophisticated with soaring cathedral ceilings , full north aspect sundrenched balcony and a short level stroll to Cronulla shopping village

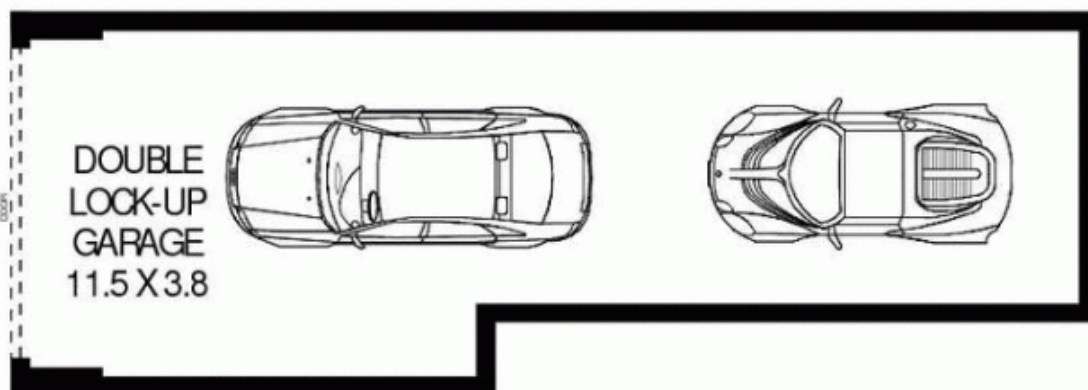
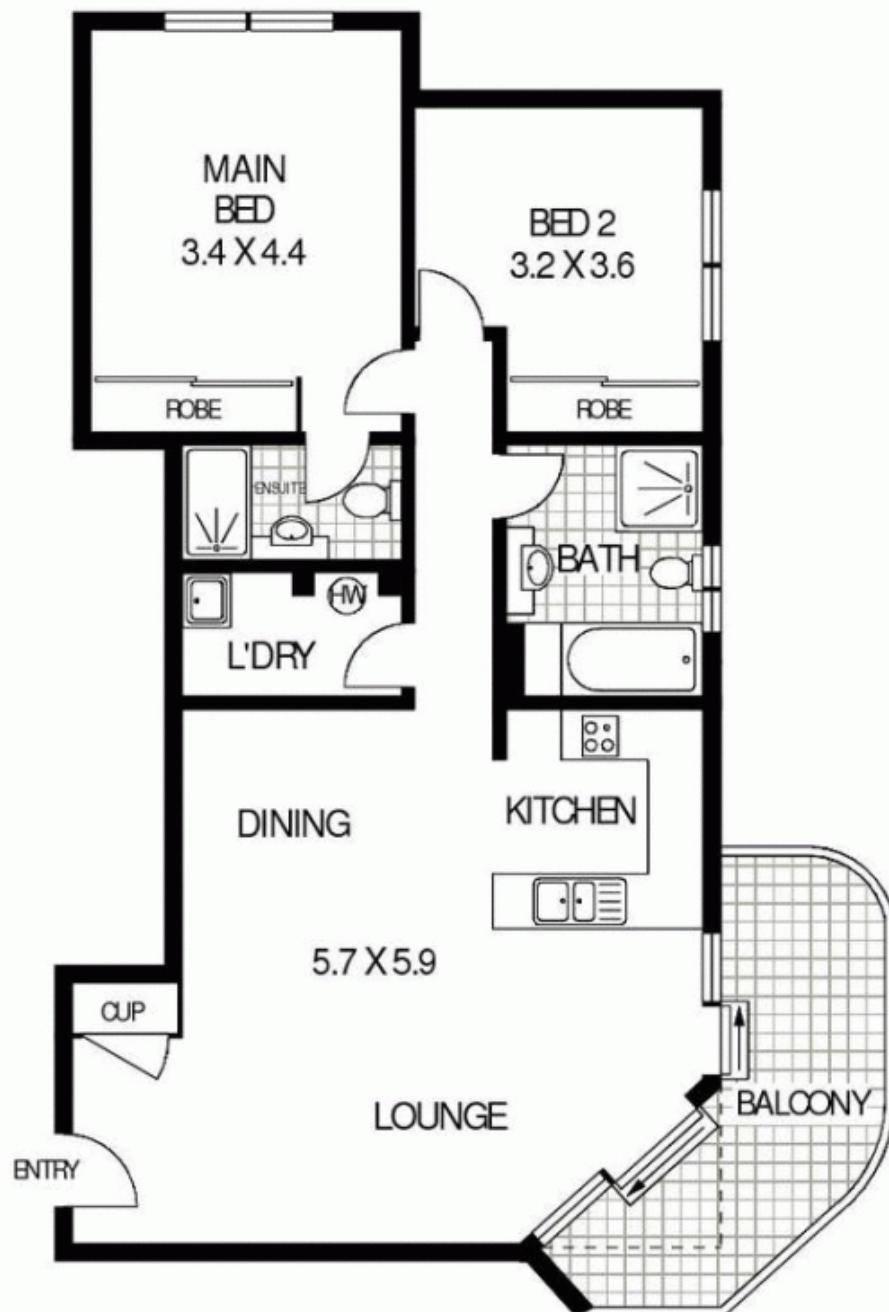
Accommodation - two generous double bedrooms both with built in wardrobes and the master featuring an ensuite, open plan and modern in design with gourmet granite kitchen

Features - airconditioning, lift access, security block, massive tandem garage, small block of nine, unit Size 89 square meters, garage size 38 square meters, total 127 square meters

Building Size : 10 sqm
View : <https://www.gibsonpartners.com/sale/nsw/sutherland/cronulla/residential/unit/5854841>



Denise Howell
02 9523 1333



9/123-125 GERRALE STREET

CRONULLA

Floor Plan Disclaimer: Mind the Gap (mtg) floor plans / site plans are intended as an approximate guide only. No representations or warranties of any nature are given or intended and any person using this information other than as a guide should always rely on their own enquiries. Mind the Gap property marketing services / 1300 133 145 / Photography, Floor plans, Copywriting, Video, Online, Design / www.mindthegap.com.au