



7 Flatrock Road GYMEA BAY NSW

4 2 2

Lifestyle - A substantial master built residence and ideally suited to a growing family, this impressive home offers expansive water views over Gymea Bay and the Royal National Park, set in a wonderfully peaceful and serene leafy pocket

Accommodation - four generous bedrooms the master features airconditioning, walk in wardrobe plus a built in, luxury ensuite with under floor heating and adjoining office, formal living area with sweeping views of the bay and overlooks the salt water inground swimming pool, the stylish renovated eat in kitchen features miele dishwasher and granite bench tops , splashbacks and fabulous waterviews

Features - Theatre/media room with wet bar , underfloor

Price : \$ 1,120,000

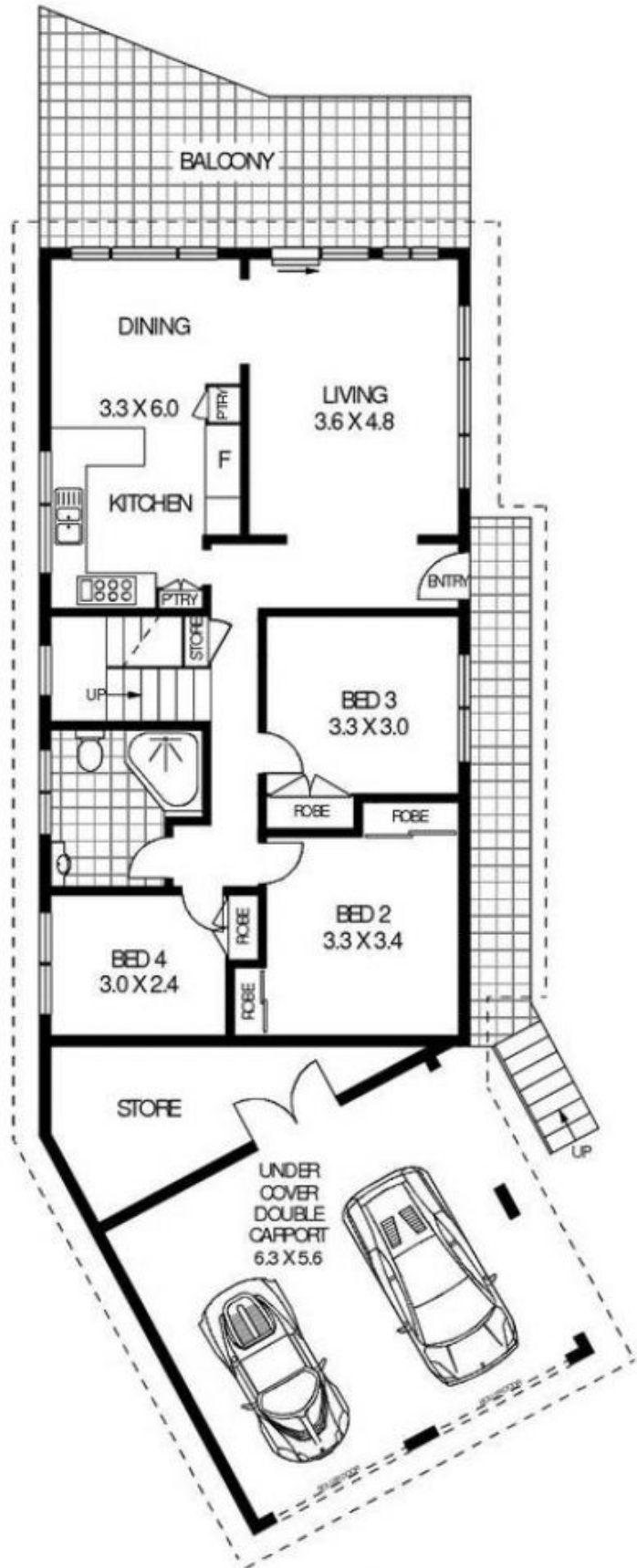
View : <https://www.gibsonpartners.com/sale/nsw/sutherland/gymea-bay/residential/house/5854837>



Denise Howell
02 9523 1333



LOWER LEVEL



GROUND LEVEL



7 FLAT ROCK ROAD

GYMEA BAY

Floor Plan Disclaimer: Mind the Gap (mtg) floor plans / site plans are intended as an approximate guide only. No representations or warranties of any nature are given or intended and any person using this information other than as a guide should always rely on their own enquiries. Mind the Gap property marketing services / 1300 133 145 / Photography, Floor plans, Copywriting, Video, Online, Design / www.mindthegap.com.au