



64 Shoalhaven Road SYLVANIA WATERS NSW

4 2 2

Lifestyle - exclusively positioned in a highly sought after pocket of Sylvania Waters, this lovingly maintained family home is offered for sale for the very first time, impressively well proportioned with a floor plan that emphasises on entertaining.

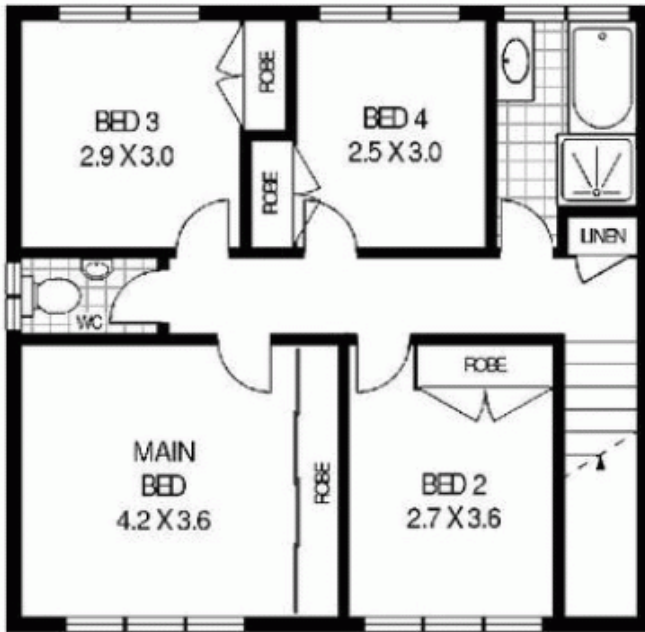
Accommodation - four generous bedrooms all with built ins, formal lounge separate formal dining plus spacious open plan family room flows to the outdoor alfresco entertaining and sun drenched northern in ground swimming pool.

Features - Brushbox timber flooring, fujitsu air conditioner, log fireplace, 2nd shower and toilet, double garage with internal access. Land size approx. 562 sqm.

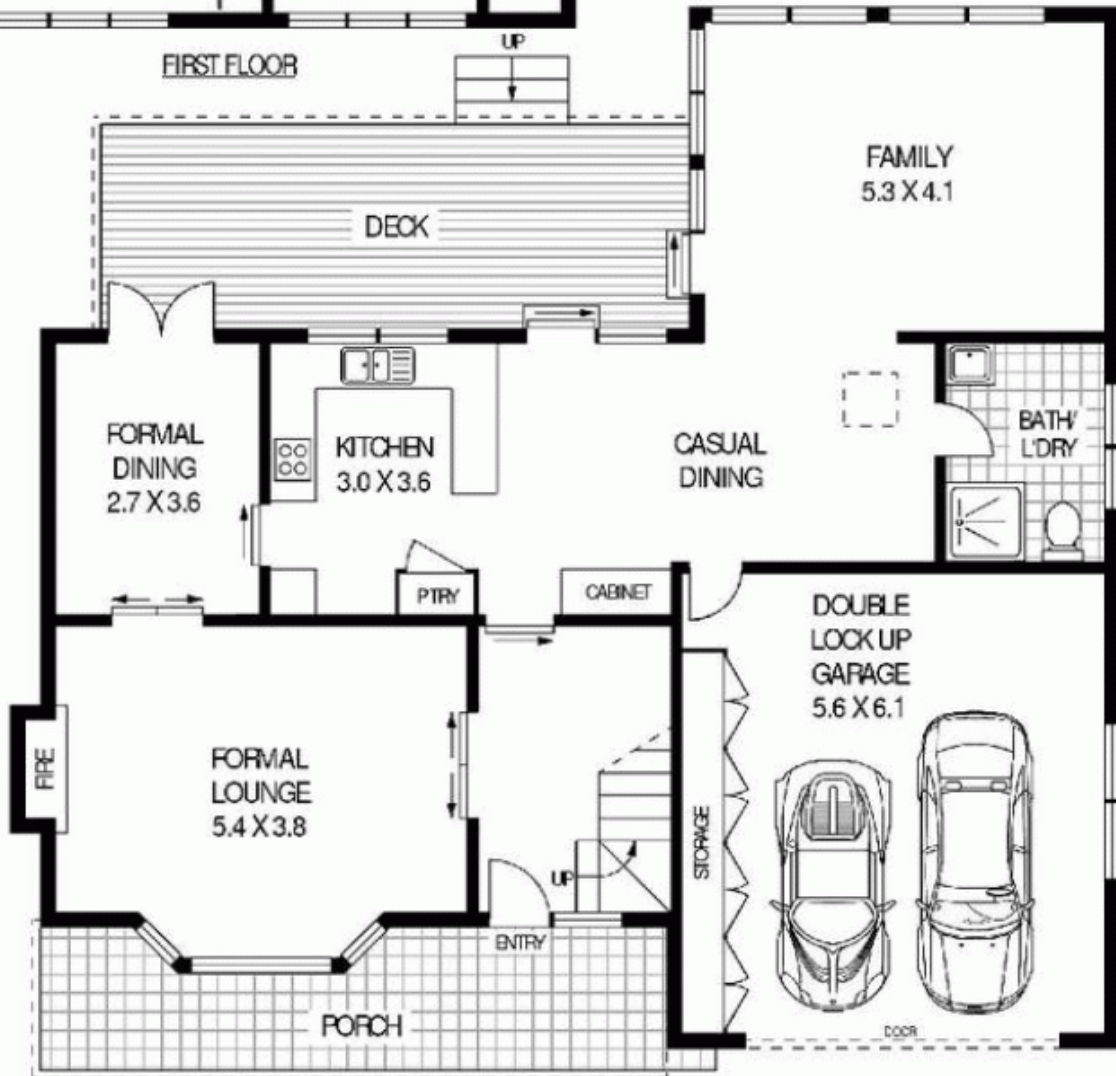
Land Size : 562 sqm
View : <https://www.gibsonpartners.com/sale/nsw/sutherland/sylvania-waters/residential/house/5854836>



Denise Howell
02 9523 1333



FIRST FLOOR



GROUND FLOOR



64 SHOALHAVEN ROAD

SYLVANIA WATERS

Floor Plan Disclaimer: Mind the Gap (ntg) floor plans & site plans are intended as an approximate guide only. No representations or warranties of any kind are given or intended and any person using this information for their own purposes should always rely on their own enquiries. Mind the Gap provides real estate services. (08) 125 1247 Photography, Real Estate, Copywriting, Video Online Design / www.mtg.com.au