



3 McDonald Street ILLAWONG NSW

6 4 5

Lifestyle - Portofino, a private estate and a residence of grand proportions set on approx. 1 acre of landscaped gardens and secluded behind an electronic security gate and offering the discerning purchaser a life of luxury

Accommodation - the main residence consists of a substantial full brick Mediterranean home plus a separate fully self contained one bedroom cottage

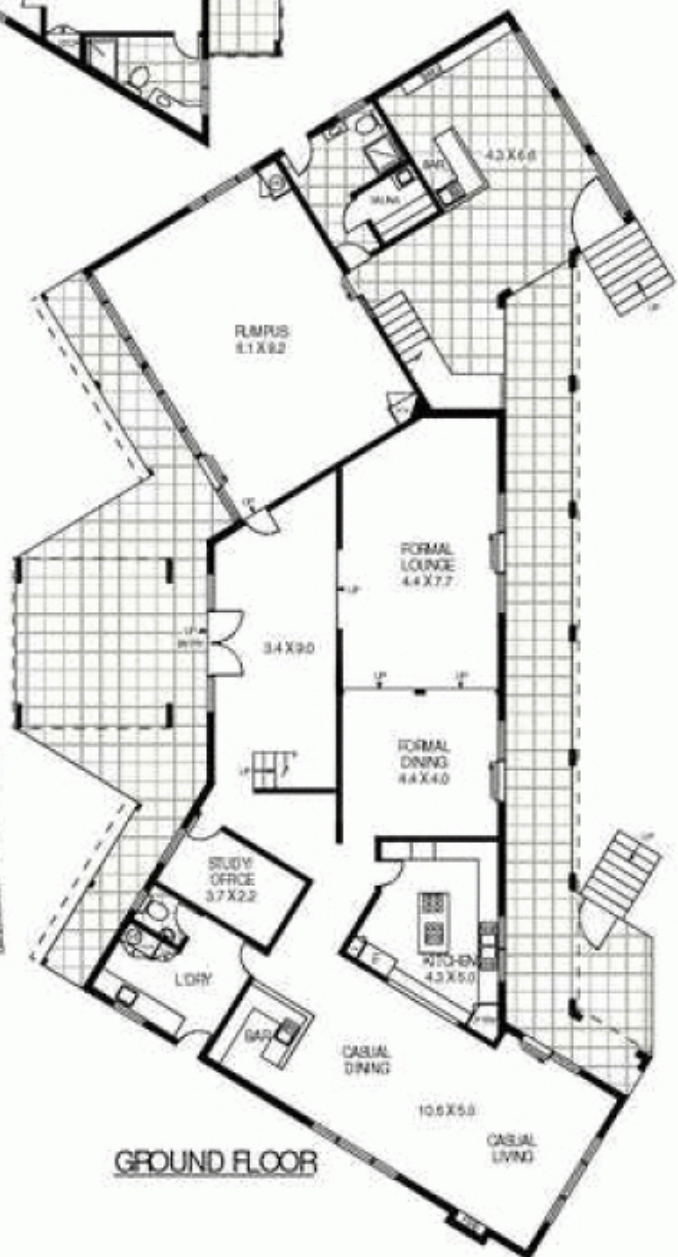
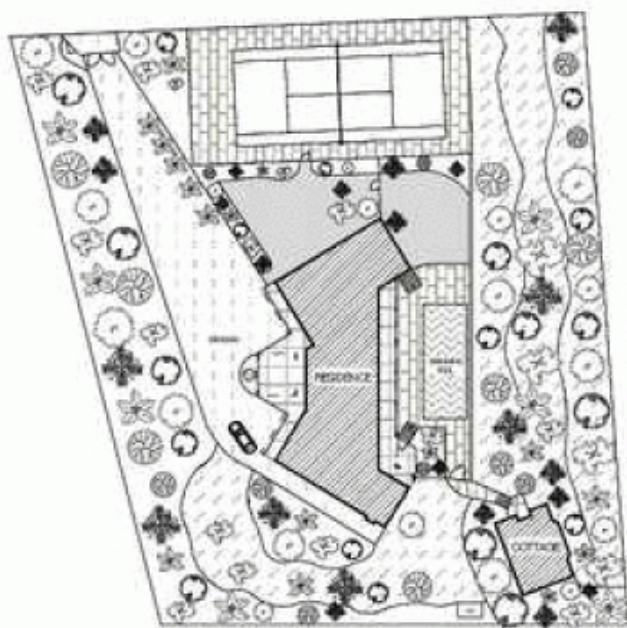
Features - full size tennis court , covered outdoor portico and built in barbecue including outdoor bar, sauna, salt water inground pool with spa, open water, bush and district views

Land Size : 3930 sqm

View : <https://www.gibsonpartners.com/sale/nsw/sutherland/illawong/residential/house/5854834>



Denise Howell
02 9523 1333



3 MCDONALD STREET

ILLAWONG

Floor Plan Disclaimer: Mind the Gap (mtg) floor plans / site plans are intended as an approximate guide only. No representations or warranties of any nature are given or intended and any person using this information other than as a guide should always rely on their own enquiries. Mind the Gap property marketing services / 1300 133 145 / Photography, Floor plans, Copywriting, Video, Online, Design / www.mindthegap.com.au

