



## 199 Nicholson Parade Cronulla NSW

3 1 1

Capitalise on this prestigious address with tranquil water views over Gunnamatta Bay along with a glorious westerly aspect. This unique dual level sanctuary with timber floorboards throughout is enviably located along the South Cronulla Peninsula with mere moments to Salmon Haul Bay and Darook Park Beach.

Character filled and flooded in natural light, this immaculate home offers three bedrooms plus a separate study and showcases a sunny timber entertaining deck overlooking established gardens and a child friendly rear yard.

Nestled amongst quality homes, this exceptional residence presents an enriched lifestyle opportunity that will delight for generations to come.

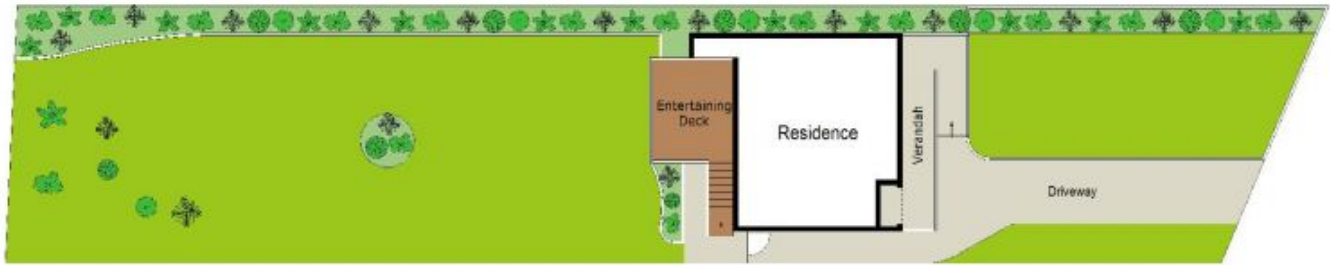
**Price** : \$ 1,905,000

**Land Size** : 527 sqm

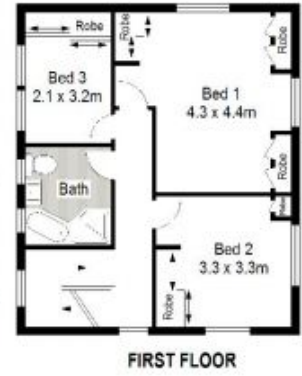
**View** : <https://www.gibsonpartners.com/sale/nsw/sutherland/cronulla/residential/house/5854216>



**Ivan Lampret**  
02 9523 1333



SITE PLAN (NOT TO SCALE)



0 1 2 3 4 5 METRES

Gibson Partners Real Estate Pty Ltd

Scale: 1:1000. Indicated only. Dimensions and square metres // All information contained herein is for general information only and does not constitute a contract. It is intended to provide a general overview of the property and is not intended to be relied upon for any other purpose.



199 Nicholson Parade, Cronulla South

**GIBSON**