



1/11-13 Girrillang Road Cronulla NSW

4 3 2

Looking to downsize without compromising on space, style or location? Positioned in a boutique complex of only four, this free-standing, dual level residence offers the utmost in comfort, lifestyle and luxury with surprising house like proportions.

Price : \$ 1,680,000

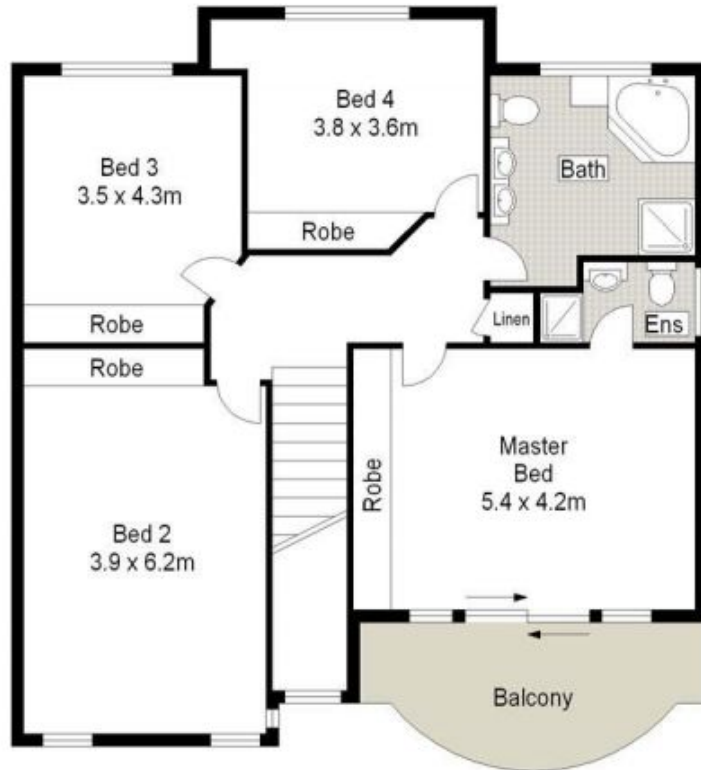
View : <https://www.gibsonpartners.com/sale/nsw/sutherland/cronulla/residential/house/5853873>

Boasting a flowing floor plan with a versatile choice of formal and informal living spaces for the whole family, this unique residence offers the ideal seaside locale within moments to a number of Cronulla's wonderful beaches.

- Multiple living options featuring stunning Tasmanian Oak parquetry floors
- Open plan kitchen with granite bench-tops, s/s Miele appliances & stove
- 4 extra large bedrooms upstairs all with built-in robes &



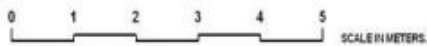
Ivan Lampret
02 9523 1333



FIRST FLOOR



GROUND FLOOR



Gibson Partners Real Estate Pty Ltd

Scale in metres. Indicative only. Dimensions are approximate. All information contained herein is gathered from sources we believe to be reliable. However we cannot guarantee its accuracy and interested persons should rely on their own enquiries.



1/11-13 Girrillang Road, Cronulla

GIBSON