



6/271-275 Kingsway Caringbah NSW

2 1 2

Positioned on the first floor of a well maintained security complex, this apartment enjoys a lovely leafy outlook and offers a fantastic opportunity in a rapidly growing market for the first home buyer or astute investor.

Price : \$ 579,000

View : <https://www.gibsonpartners.com/sale/nsw/sutherland/caringbah/residential/apartment/5853869>

Featuring only one common wall and conveniently located within walking distance to Caringbah station, restaurants, cafes, schools and shops and only minutes' drive to Westfield Miranda and Cronulla's beaches, bays and golf courses.

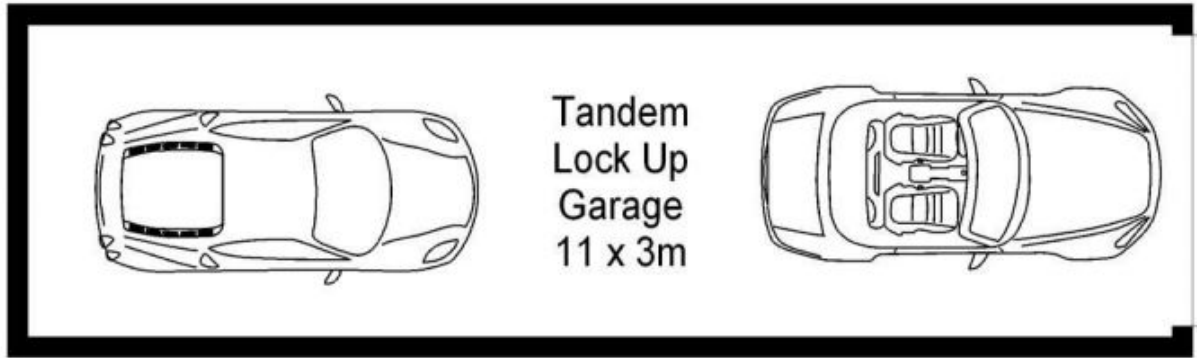
- Open plan living & dining area with floating floorboards
- Modern stone kitchen with ample storage & s/s appliances
- Two good sized bedrooms both with built in wardrobes
- Neat & tidy original bathroom with separate toilet



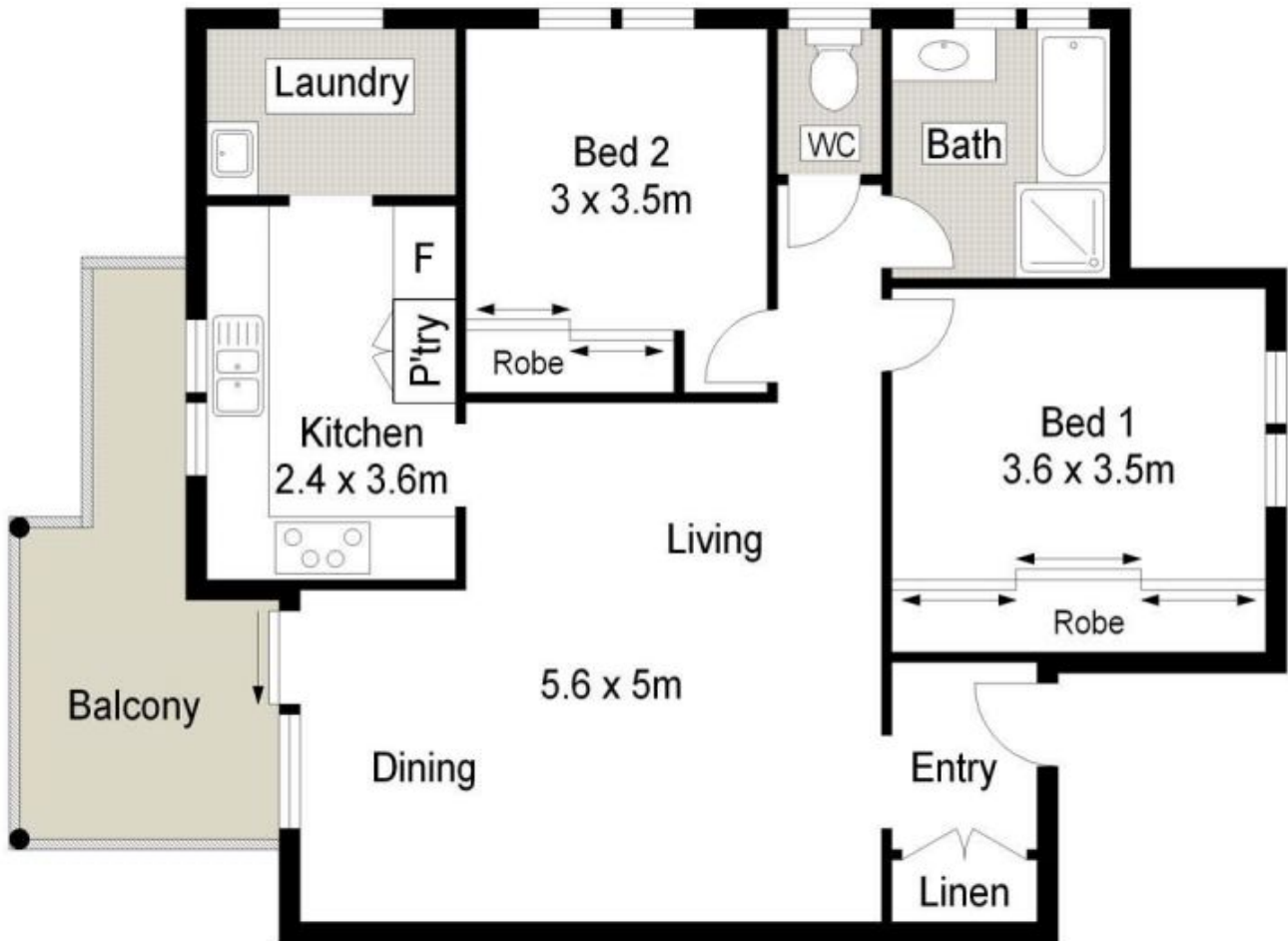
Ivan Lampret
02 9523 1333



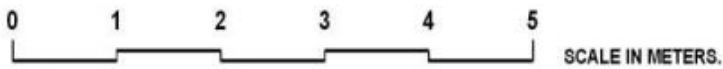
Karla Madgwick
02 9523 1333



BASEMENT



FIRST FLOOR



Gibson Partners Real Estate Pty Ltd

Scale in metres. Indicative only. Dimensions are approximate. All information contained herein is gathered from sources we believe to be reliable. However we cannot guarantee its accuracy and interested persons should rely on their own enquiries.

