






62 Castelnau Street Caringbah South NSW

3  2  2 

Immaculate and solid single level residence offering spacious, light filled interiors which flow out to a generous yet private rear deck.

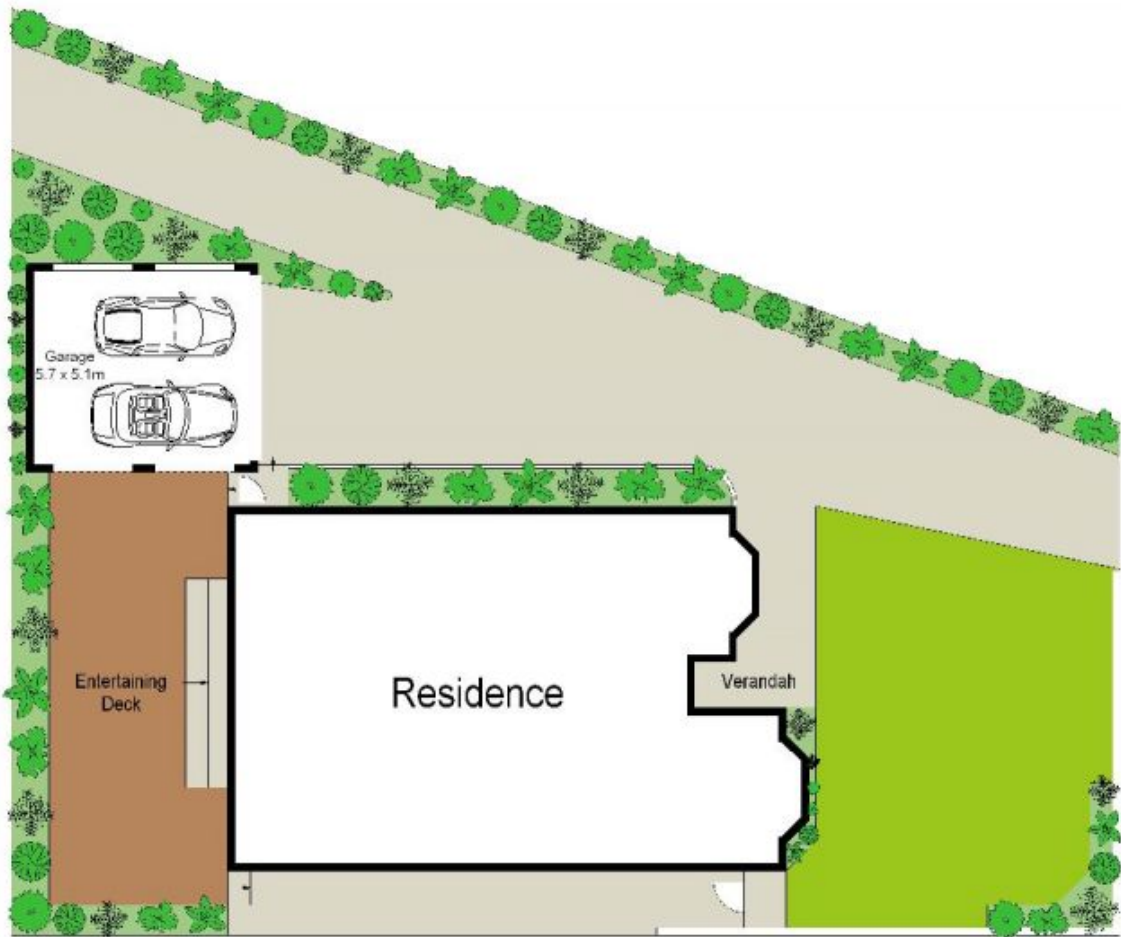
Tastefully refurbished and well presented with high ceilings throughout, it is conveniently situated in a peaceful pocket of Caringbah South with quality schools, shops, parks and transport nearby.

- Double brick construction with cedar windows and doors
- Timber/laminate kitchen with separate dining
- Huge family room with solid timber floors
- Over-sized front bedrooms with bay windows (BIR)
- Updated bathrooms (spa bath), R/C A/C + gas
- Sunny landscaped and grassed front yard

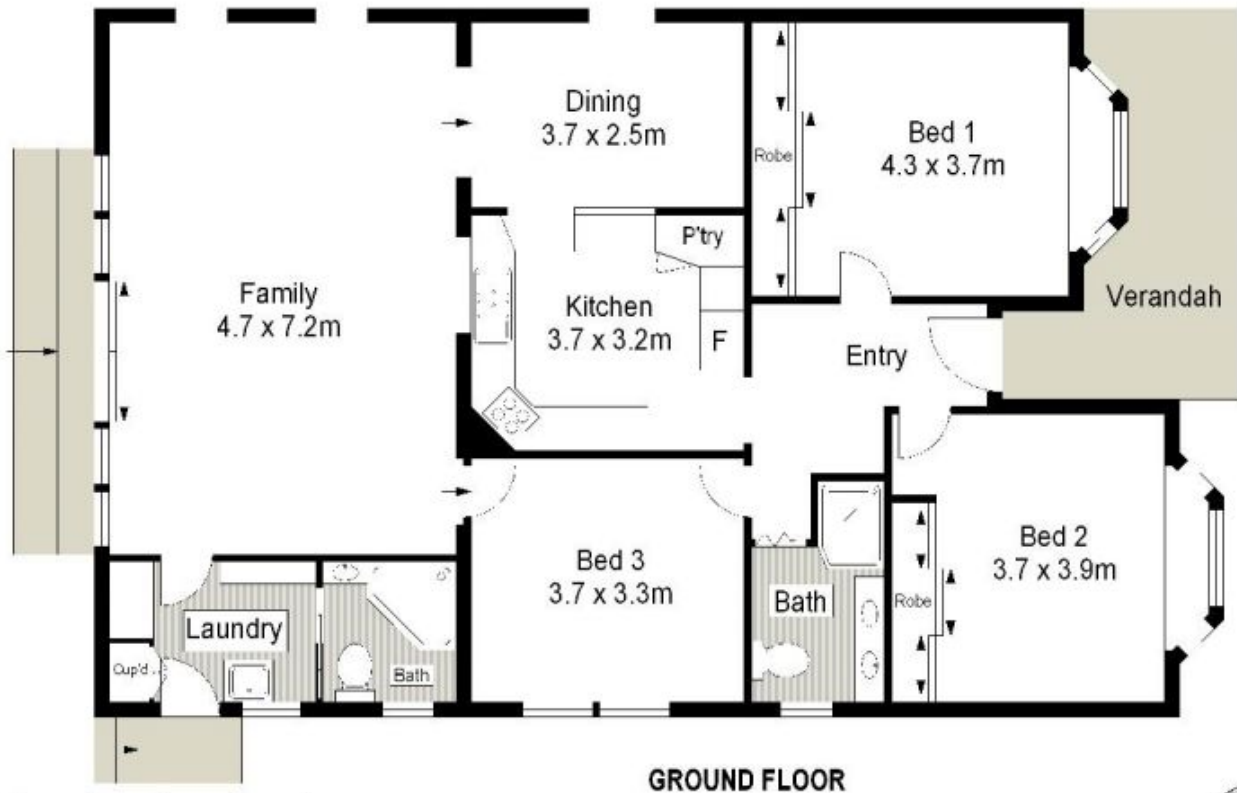
Price : \$ 1,150,000

Land Size : 556 sqm

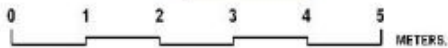
View : <https://www.gibsonpartners.com/sale/nsw/sutherland/caringbah-south/residential/house/5853848>



SITE PLAN (NOT TO SCALE)



GROUND FLOOR



Gibson Partners Real Estate Pty Ltd

Scale in metres. The above only information is approximate. All information contained herein is gathered from sources we believe to be reliable, however we cannot guarantee its accuracy and interested persons should rely on their own enquiries.



62 Castelnau Street, Caringbah South

GIBSON