



12 Wistaria Street Dolans Bay NSW

3 2 2

Peacefully located in a private and highly sought after Dolans Bay locale, this great family residence presents a valuable prospect for the astute investor or home buyer to secure a land holding of approximately 727.2 sqm with a 17.83 frontage block that is laden with potential.

Price : \$ 1,455,000

Land Size : 727.2 sqm

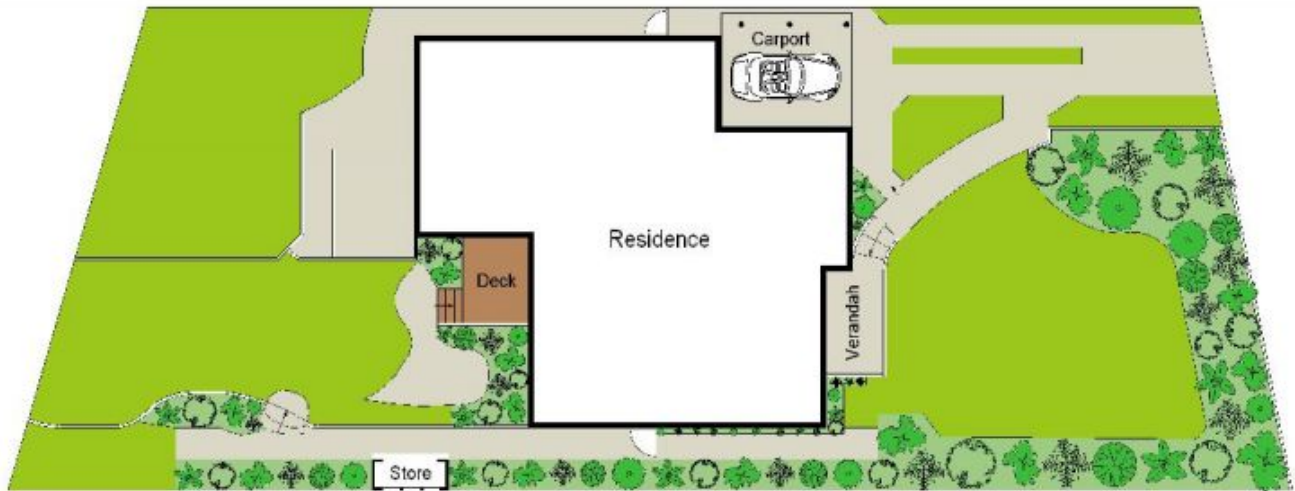
View : <https://www.gibsonpartners.com/sale/nsw/utherland/dolans-bay/residential/house/5853840>

Immaculate and original throughout this single level home is completely liveable as is and offers the opportunity to live in now, renovate or lease out while you await approval on plans to renovate, rebuild or redevelop (S.T.C.A.).

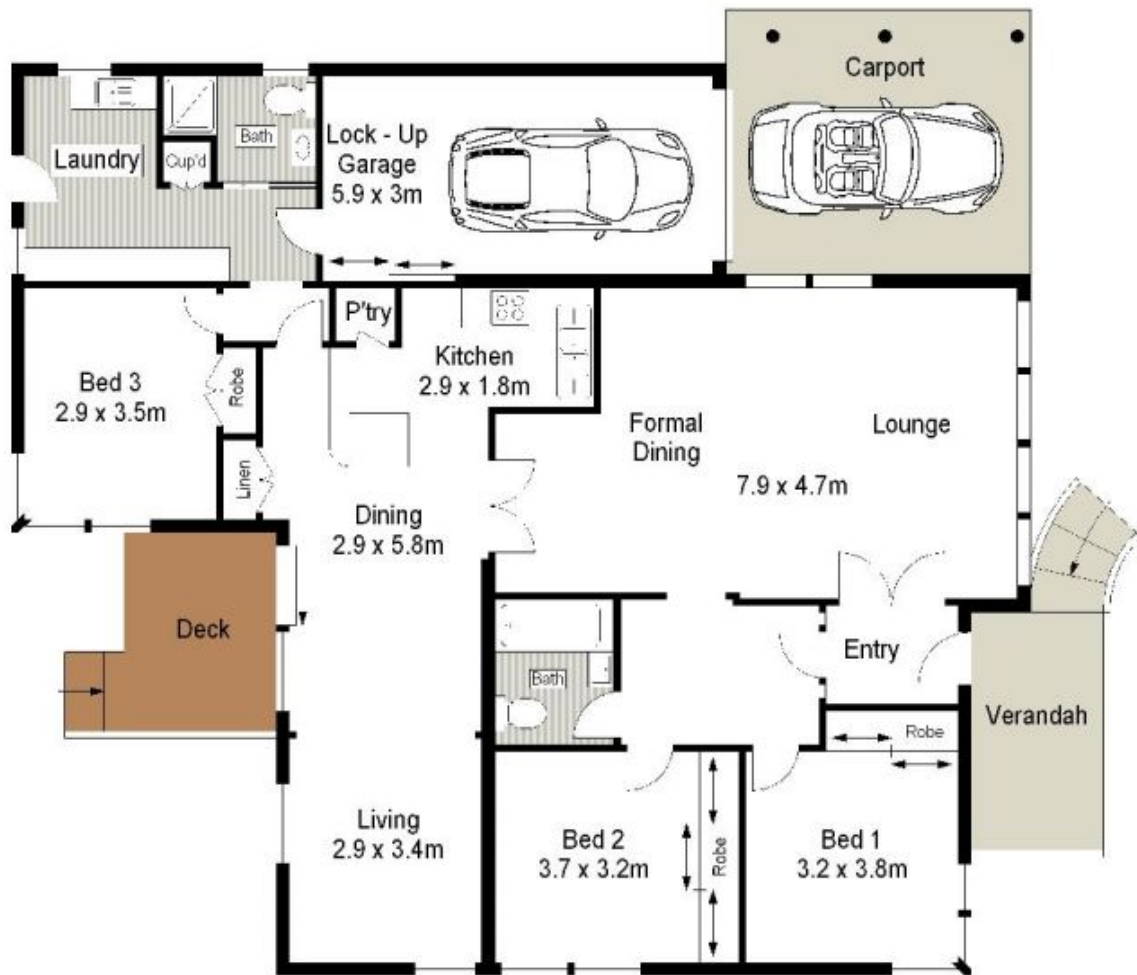
Desirably well located in a quiet family friendly street within walking distance to local shops, schools, parks, transport and Wally's Wharf, this remarkable property is also within a five minute drive to the cosmopolitan hub of Cronulla and its choice of wonderful beaches.



Ivan Lampret
02 9523 1333



SITE PLAN (NOT TO SCALE)



GROUND FLOOR



Gibson Partners Real Estate Pty Ltd

Scale in metres. The relative only. Dimensions are approximate. All information contained herein is gathered from sources we believe to be reliable, however we cannot guarantee its accuracy and interested persons should rely on their own enquiries.



12 Wistaria Street, Dolans Bay

GIBSON