



14/22 Hill Street Woollooware NSW

2 1 1

Situated on the top floor with a sunny westerly aspect, this neat two bedroom apartment is quietly located away from the hustle and bustle of Cronulla yet still within walking distance to Cronulla's beaches, shops and transport.

Price : \$ 543,000

View : <https://www.gibsonpartners.com/sale/nsw/sutherland/woollooware/residential/apartment/5853813>

Ideal as a first home or investment, there is a great opportunity to personalise and reap the benefits of this convenient location.

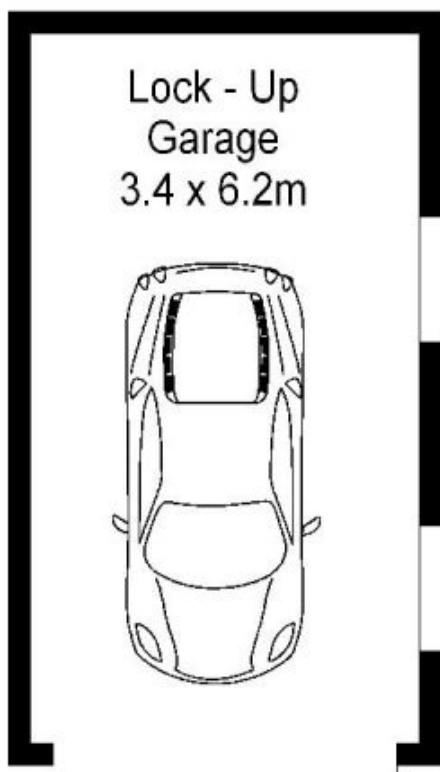
- Sundrenched west facing balcony with leafy outlook
- Generous bedrooms with BIR's & main with balcony
- Combined lounge & dining area with air conditioning
- Updated light-filled kitchen flowing through to living area
- Renovated bathroom with internal laundry facilities
- Single LUG with scope to park a second car in front



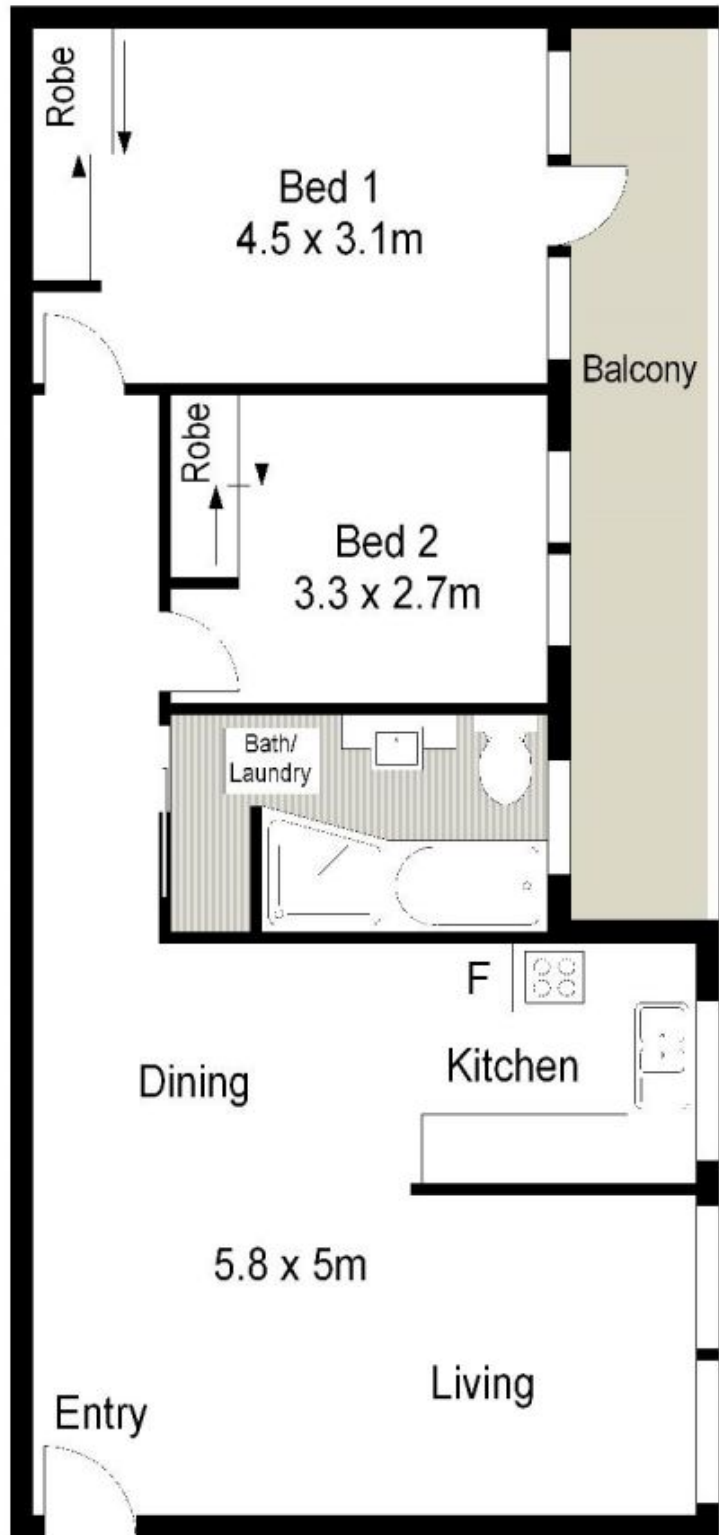
Ivan Lampret
02 9523 1333



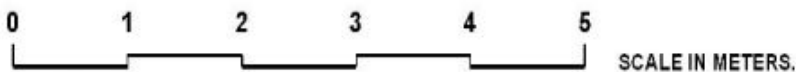
Karla Madgwick
02 9523 1333



GROUND FLOOR



TOP FLOOR



Gibson Partners Real Estate Pty Ltd

Scale in metres. The above only information is approximate. All information contained herein is gathered from sources we believe to be reliable, however we cannot guarantee its accuracy and interested persons should rely on their own enquiries.

