



2/85 Yathong Road Caringbah NSW

3 2 2

A superb family sanctuary, this architecturally designed townhouse sets a standard for contemporary living. One of three in an exclusive collection it features an innovative layout with light filled interiors and designed to integrate indoor and outdoor living spaces.

Beautifully crafted over two spacious levels the northerly orientation ensures bright, breezy interiors throughout. The home is fresh and vibrant, displays fine quality at every turn and is only moments to the area's premier choice of schools, cafes and public transport.

* Boutique development of only 3, boasting a north facing aspect & house like proportions

* Open plan interiors flow seamlessly to a tiled alfresco entertaining area

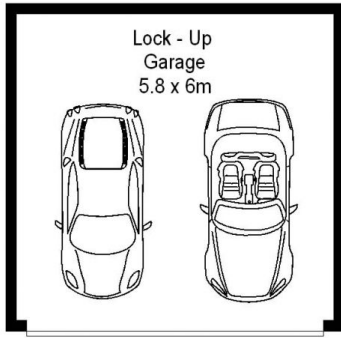
* Gourmet Caesarstone gas kitchen with stainless steel appliances & glass splashbacks

Price : \$ 855,000

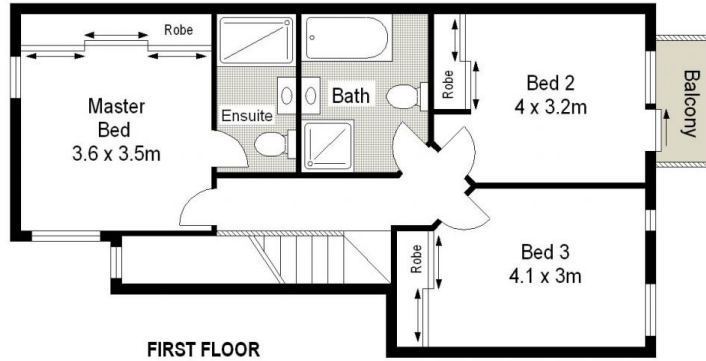
View : <https://www.gibsonpartners.com/sale/nsw/sutherland/caringbah/residential/townhouse/5853731>



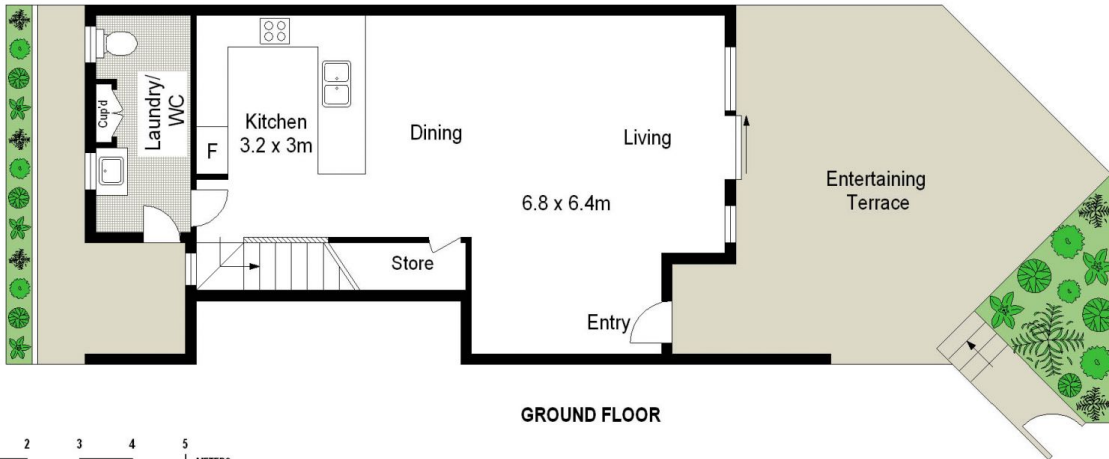
Ivan Lampret
02 9523 1333



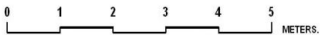
BASEMENT



FIRST FLOOR



GROUND FLOOR



Scale in metres. Indicative only. Dimensions are approximate. All information contained herein is gathered from sources we believe to be reliable. However we cannot guarantee its accuracy and interested persons should rely on their own enquiries.

2/85 Yathong Road, Caringbah

