



23 Wentworth Street Caringbah South NSW

4 2 1

Graced with a desirable north facing rear yard, an abundance of accommodation and light-filled living spaces, this charming dual level family residence will hold immense appeal for those looking for space and style in a highly sought after locale.

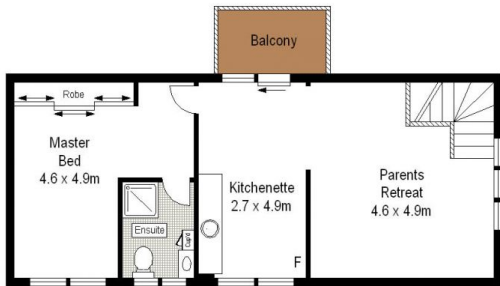
Immaculately presented, the generous floor-plan provides a choice of versatile living areas, self-contained accommodation or large parent's retreat upstairs, a home office with private entry, covered alfresco entertaining deck and resort style in ground pool.

Boasting an elevated position in a quiet leafy street within close proximity to local schools, shops, transport and boat ramp, this much loved home offers a lifestyle of warmth, love and convenience.

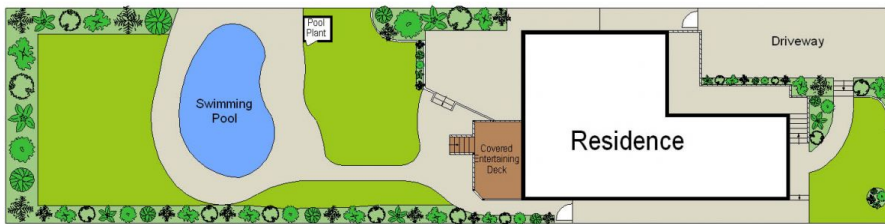
Land Size : 720 sqm
View : <https://www.gibsonpartners.com/sale/nsw/sutherland/caringbah-south/residential/house/5853729>



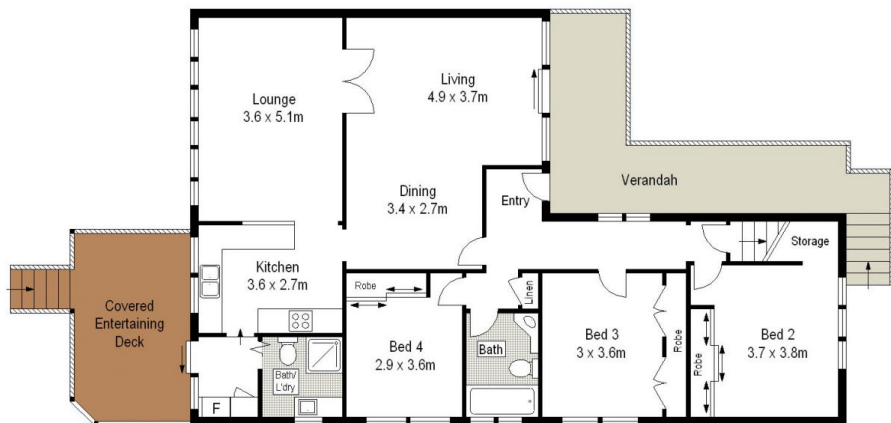
Ivan Lampret
02 9523 1333



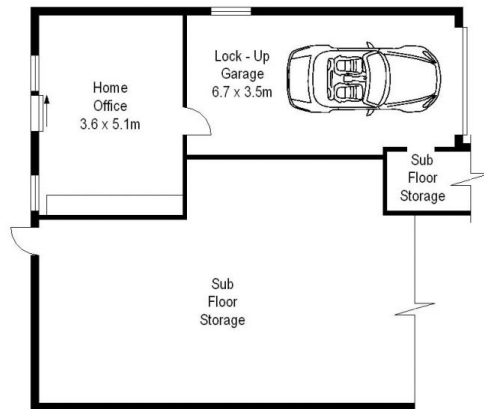
FIRST FLOOR



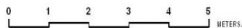
SITE PLAN (NOT TO SCALE)



GROUND FLOOR



LOWER GROUND FLOOR



Scale in metres. Indicative only. Dimensions are approximate. All information contained herein is gathered from sources we believe to be reliable. However we cannot guarantee its accuracy and interested persons should rely on their own enquiries.



23 Wentworth Street, Caringbah South

