



19 Immarna Avenue Lilli Pilli NSW

4 🏠 3 🚗 3 🚗

Superbly elevated capturing expansive water views from almost every room over The Port Hacking River and across to The Royal National Park, this impressive residence is designed to take full advantage of its sun drenched North/Westerly orientation.

Boasting an abundance of accommodation and a generous choice of versatile living and entertaining spaces, this bright breezy residence offers fresh interiors and an appealing, year-round holiday style ambience emphasized by the large alfresco terrace and resort like in ground pool.

Privately positioned and surrounded by attractive easy care landscaped gardens, this property offers a relaxed riverside sanctuary in a highly sought after cul de sac locale.

Price : \$ 1,450,000

Land Size : 828 sqm

View : <https://www.gibsonpartners.com/sale/nsw/utherland/lilli-pilli/residential/house/5853650>



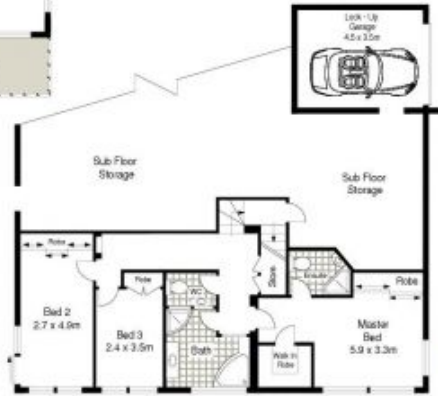
Ivan Lampret
02 9523 1333



Karla Madgwick
02 9523 1333



GROUND FLOOR



LOWER GROUND FLOOR



SITE PLAN (NOT TO SCALE)



Scale in metres. Indicative only. Dimensions are approximate. All information contained herein is gathered from sources we believe to be reliable. However we cannot guarantee its accuracy and interested persons should rely on their own enquiries.

19 Immarna Avenue, Lilli Pilli

