



## 4/59 Ewos Parade Cronulla NSW

2 1 1

Boasting an elevated ground floor position in the well renowned Brentwood building, this spacious 2 bedroom apartment offers relaxed open plan living in a sensational seaside locale.

**Price** : \$ 647,500

**View** : <https://www.gibsonpartners.com/sale/nsw/sutherland/cronulla/residential/apartment/5853601>

Within strolling distance to Shelly Park, The Esplanade, beaches and local shops, this property is ideal to move straight into yet offers some scope for future enhancements at your leisure.

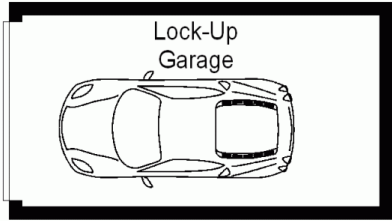
- \* Elevated ground floor position in security building with intercom entry
- \* Generous main bedroom with wardrobe & access to bathroom
- \* Two way bathroom with separate toilet
- \* Modern kitchen with stainless steel appliances &



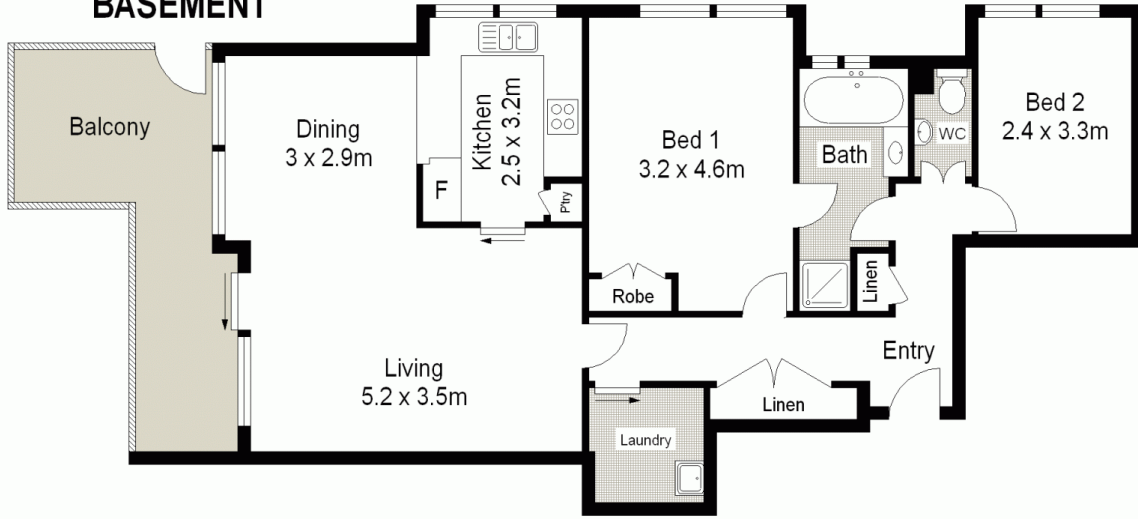
**Ivan Lampret**  
02 9523 1333



**Karla Madgwick**  
02 9523 1333



## BASEMENT



0 1 2 3 4 5 meters

## GROUND FLOOR



Scale in metres. Indicative only. Dimensions are approximate. All information contained herein is gathered from sources we believe to be reliable. However we cannot guarantee its accuracy and interested persons should rely on their own enquiries.

4/59 Ewos Parade, Cronulla

