



11 Ruby Road Gymea NSW

5 3 2

Spread over 2 spacious levels and offering plenty of accommodation, this much loved home offers multiple options for large family living and entertaining. The versatile layout provides the potential for a dual living arrangement while the choice of living areas, covered rear patio and saltwater in ground pool is an entertainer's delight.

Situated on the high side of a cul-de-sac street within strolling distance of local schools, parks, shops and transport, this property offers families and renovators plenty of room to grow and further scope to capitalise on its ultra-convenient position.

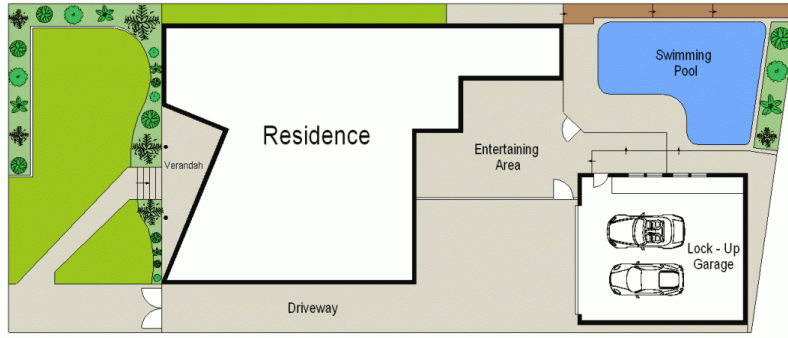
- * 3 generous bedrooms downstairs all with BIR plus a large family bathroom (separate toilet)
- * Light-filled family living room and separate formal dining

Land Size : 626 sqm

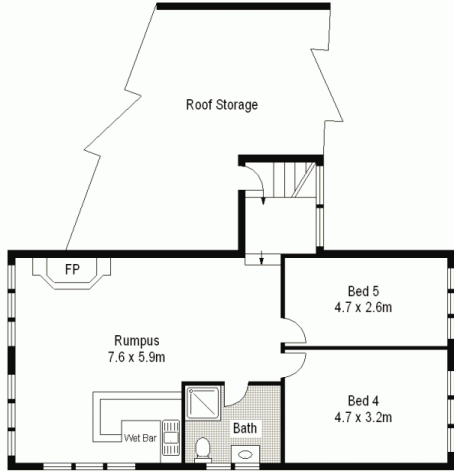
View : <https://www.gibsonpartners.com/sale/nsw/sutherland/gymea/residential/house/5853595>



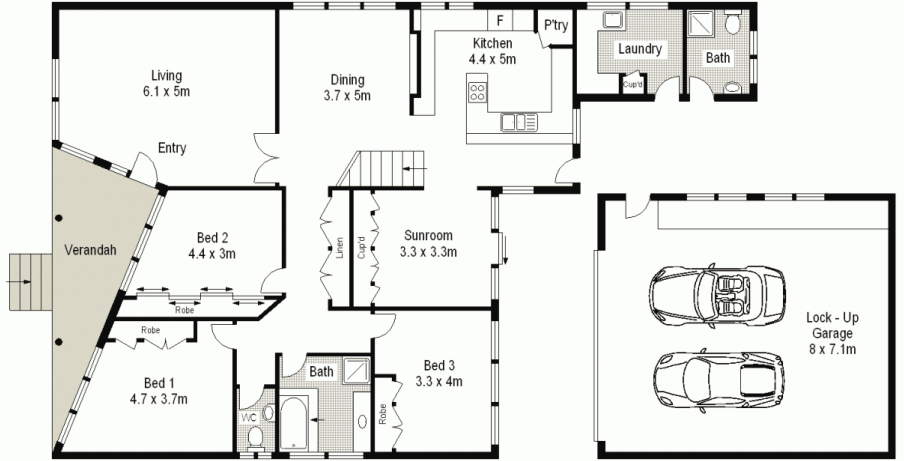
Ivan Lampret
02 9523 1333



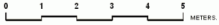
SITE PLAN (NOT TO SCALE)



FIRST FLOOR



GROUND FLOOR



Scale in metres. Indicative only. Dimensions are approximate. All information contained herein is gathered from sources we believe to be reliable. However we cannot guarantee its accuracy and interested persons should rely on their own enquiries.



11 Ruby Road, Gymea

