



24/241-245 Kingsway Caringbah NSW

2 1 1

Positioned on the middle floor of a well maintained security complex, this modern two bedroom apartment enjoys a private, leafy outlook and is embraced by afternoon sun.

Immaculately presented and conveniently located within walking distance of Caringbah station, restaurants, cafes, schools and shops and only minutes from Miranda Westfield and Cronulla's beaches, bays and golf courses. This property represents a fantastic opportunity in a rapidly growing market for the first home buyer or astute investor.

* Attractive neutral colour palette, freshly painted & carpeted throughout

* Generous open plan lounge/dining area flows to sunny west facing balcony

Price : \$ 475,000

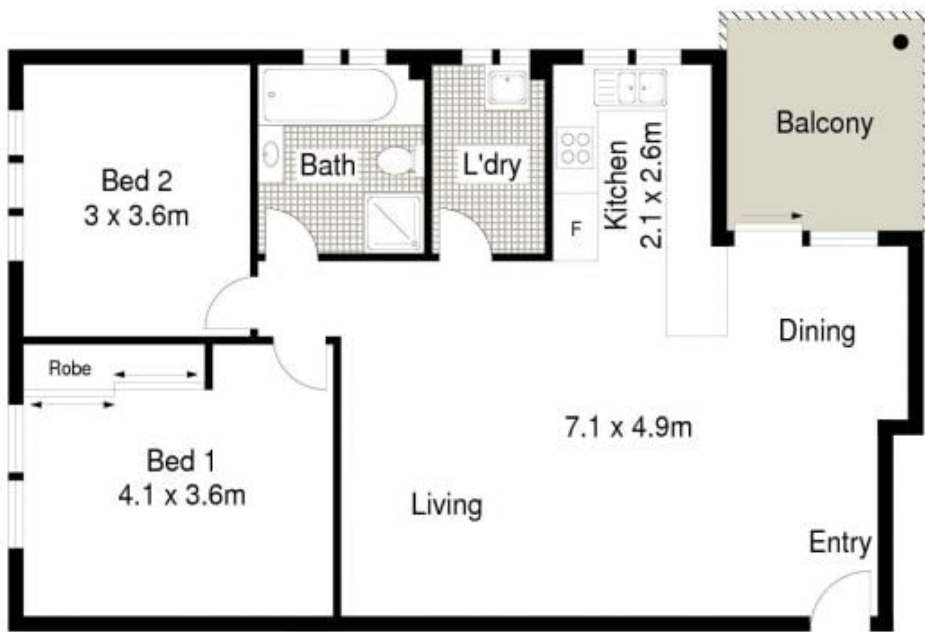
View : <https://www.gibsonpartners.com/sale/nsw/sutherland/caringbah/residential/apartment/5853584>



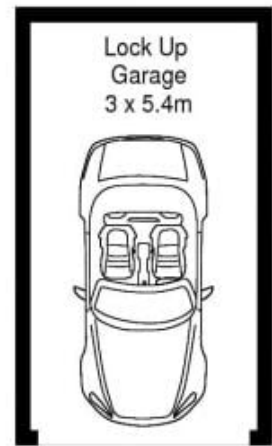
Ivan Lampret
02 9523 1333



Karla Madgwick
02 9523 1333



FIRST FLOOR



BASEMENT

0 1 2 3 4 5 meters

Scale in metres. Indicative only. Dimensions are approximate. All information contained herein is gathered from sources we believe to be reliable. However we cannot guarantee its accuracy and interested persons should rely on their own enquiries.

INT : 78m²
EXT : 23m²



24/241 - 245 Kingsway, Caringbah

