



## 20 Bathurst Street Gymea NSW

5 🏠 2 🚗 2 🚗

This treasured brick home offers multiple options for large family living and includes a desirable rear north aspect. The versatile layout provides potential separate accommodation downstairs while the private, sunny rear yard is an entertainer's delight with an undercover deck and large child friendly grassed area.

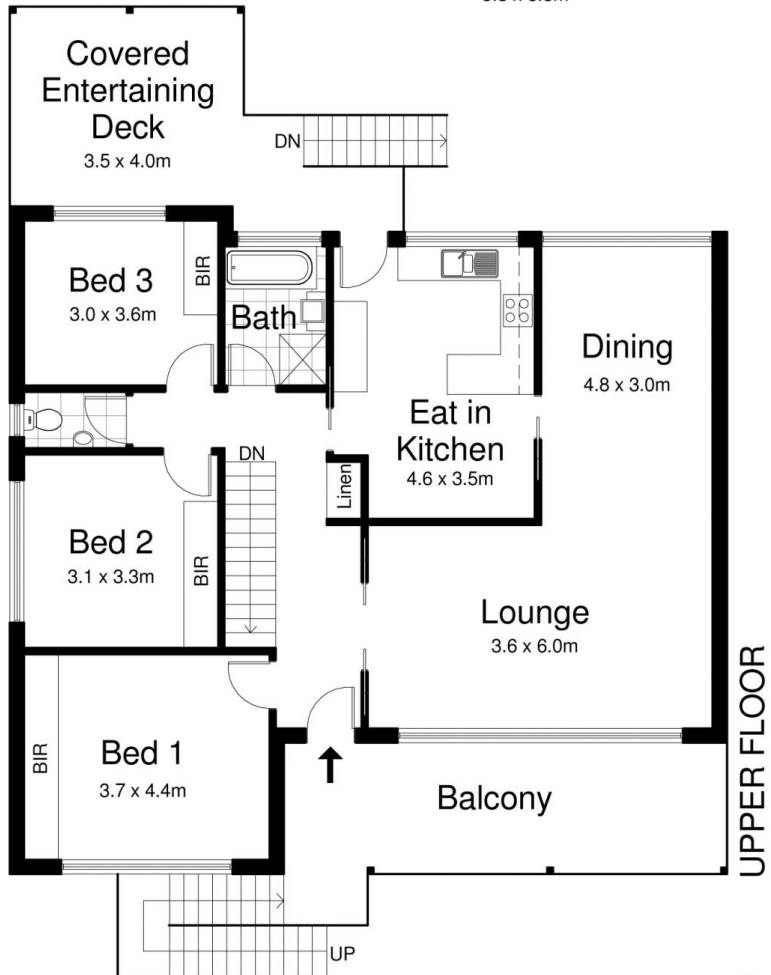
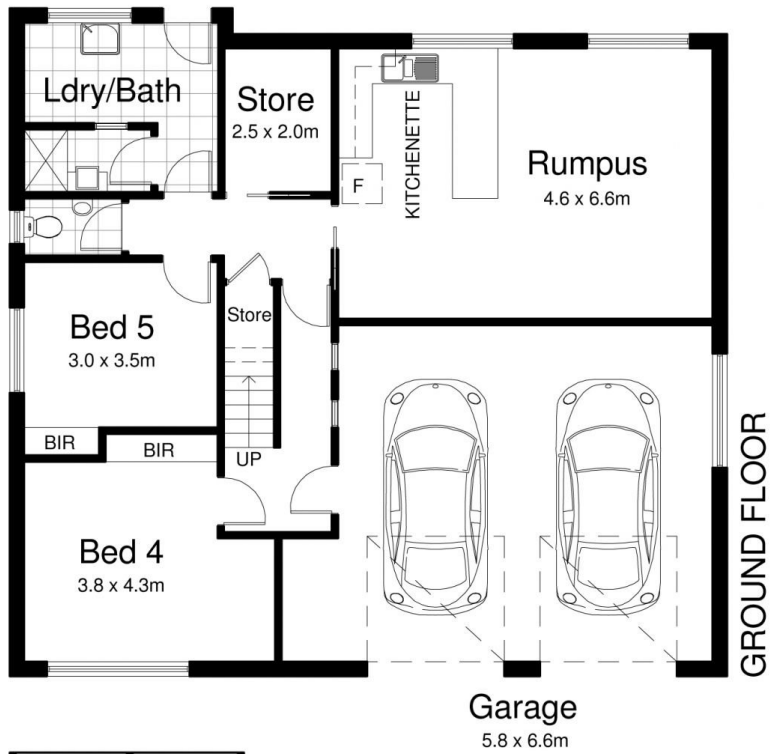
**View :** <https://www.gibsonpartners.com/sale/nsw/sutherland/gymea/residential/house/5853528>

Situated on the high side of a quiet leafy street within strolling distance of local shops and schools, this property is all about location and will suit families seeking privacy and convenience.



**Ivan Lampret**  
02 9523 1333

- \* Brick home with adaptable floor plan that would suit two families or one large family
- \* Immaculately presented and freshly painted with loads of potential



## 20 Bathurst Street, GYMEA

DISCLAIMER: All care has been taken in preparing this floorplan, however the accuracy is not guaranteed and no liability will be accepted for any reliance placed upon it  
 Produced by PRODUCT PHOTOGRAPHY STUDIO mob: 0414 697 215 email: mgphoto@people.net.au