



2/4-6 Combara Avenue Caringbah NSW

3 2 1

With bright airy and free flowing interiors, this quality built near new townhouse offers a large open plan design that extends to a large fully paved entertainer's courtyard.

Positioned in a cul-de-sac location and small boutique development of only 6 townhome's, this property would ideally suit, downsizer's, executive couples and small families looking for relaxed low maintenance living.

Light open plan designed lounge and dining area with timber floors.

Fully paved entertainer's courtyard and alfresco style dining.

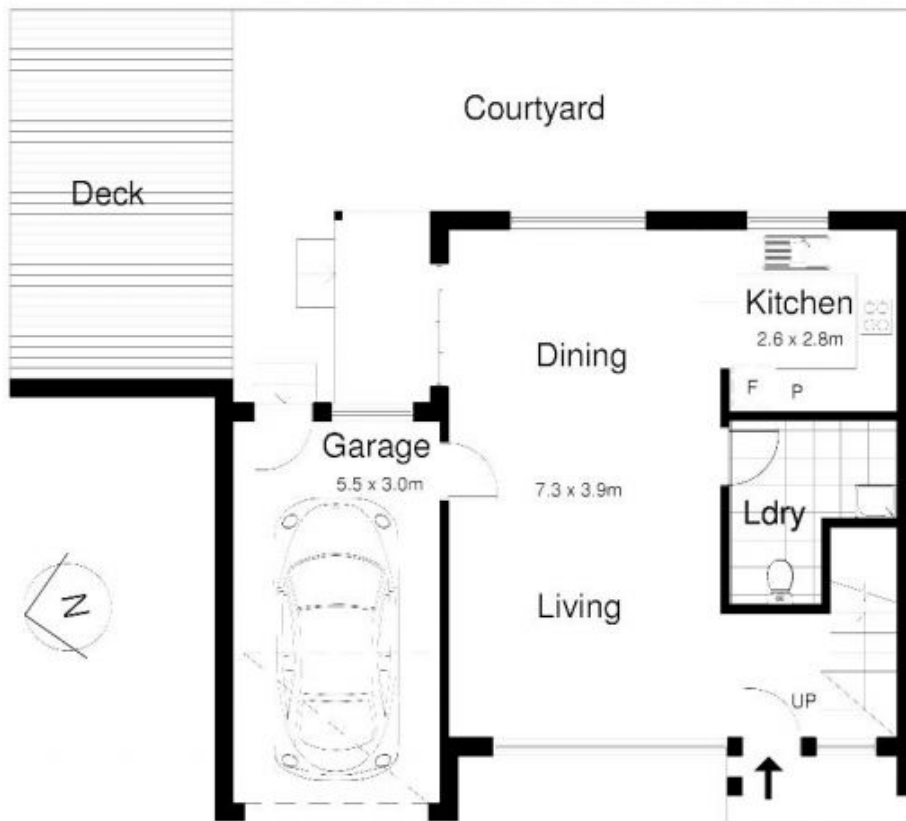
Designer kitchen with stone tops, gas cooking and

Price : \$ 780,000

View : <https://www.gibsonpartners.com/sale/nsw/sutherland/caringbah/residential/townhouse/5853511>



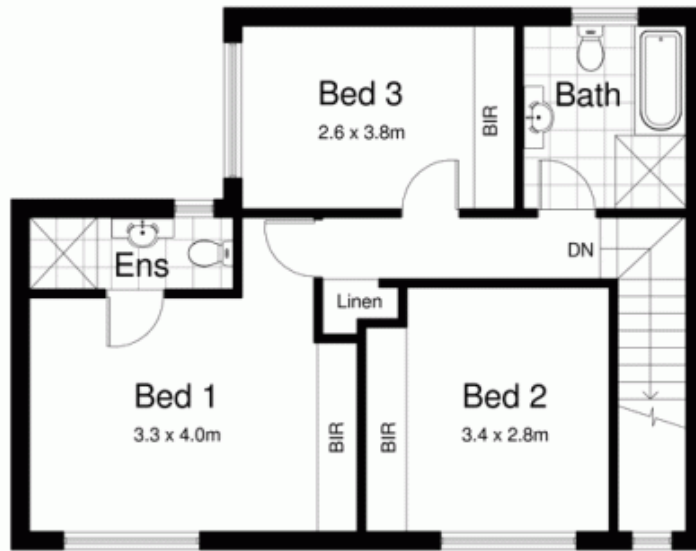
FIRST FLOOR



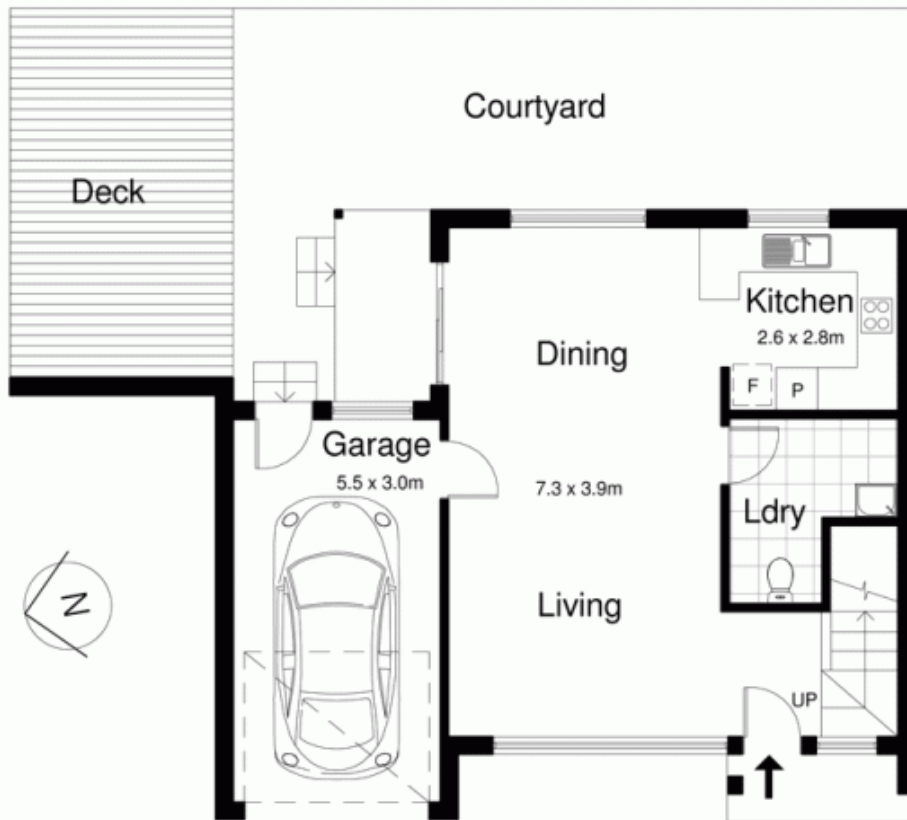
GROUND FLOOR

2/4 Combara Avenue , CARINGBAH

DISCLAIMER: All care has been taken in preparing this floorplan, however the accuracy is not guaranteed and no liability will be accepted for any reliance placed upon it
 Produced by PRODUCT PHOTOGRAPHY STUDIO mob: 0414 697 215 email: mgphoto@people.net.au



FIRST FLOOR



GROUND FLOOR

2/4 Combara Avenue , CARINGBAH

DISCLAIMER: All care has been taken in preparing this floorplan, however the accuracy is not guaranteed and no liability will be accepted for any reliance placed upon it
 Produced by PRODUCT PHOTOGRAPHY STUDIO mob: 0414 697 215 email: mgphoto@people.net.au