



13 Marsh Avenue Cronulla NSW

4 2 3

Presenting a welcoming facade and grand proportions throughout, this dual level residence is configured for generous family living and entertaining.

Boasting a desirable North facing rear yard with large light-filled windows that accentuate the properties many features, this stunning family home offers a contemporary open plan layout that flows effortlessly outdoors to a covered alfresco entertaining area, saltwater in-ground pool and level rear yard.

Only 5 years young and situated in a quiet street close to Cronulla's golf course, schools and beaches, this property offers the ultimate family lifestyle.

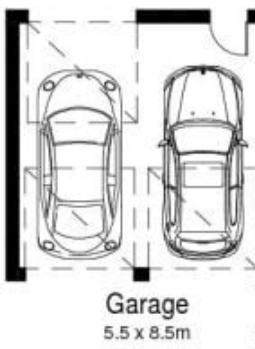
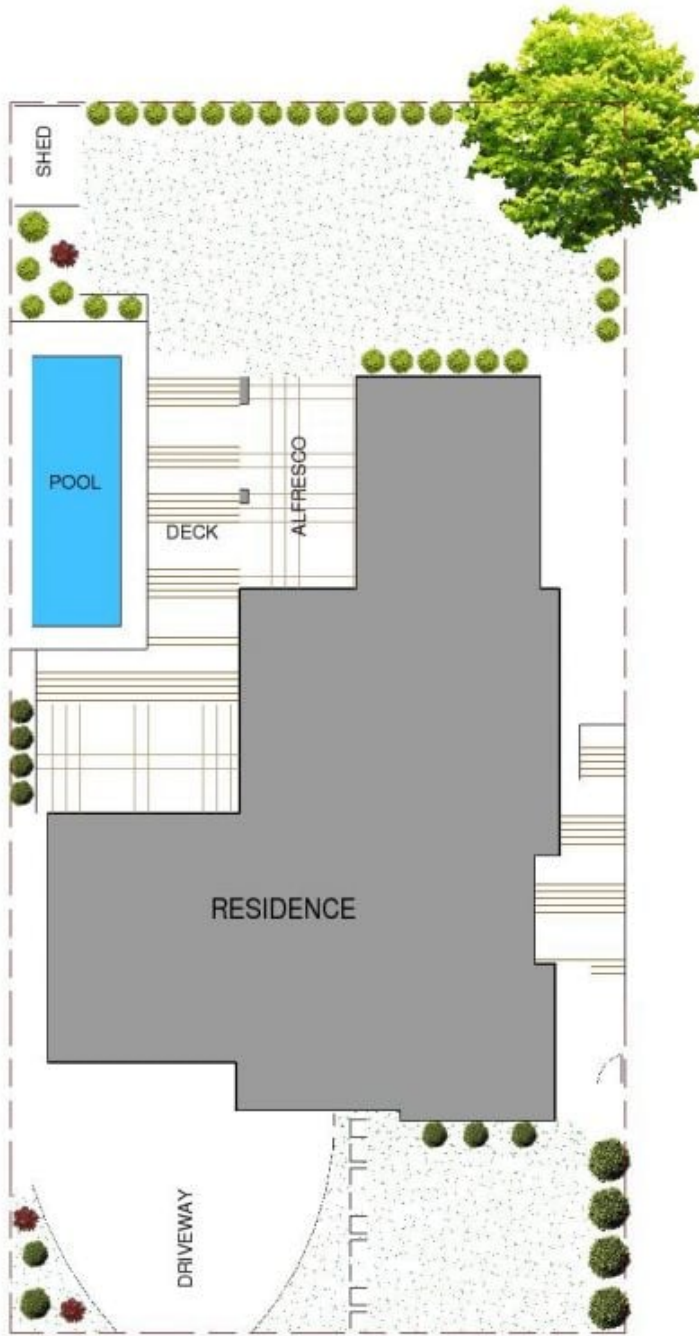
* 4 generous bedrooms all with built-in robes

Land Size : 645 sqm

View : <https://www.gibsonpartners.com/sale/nsw/sutherland/cronulla/residential/house/5853470>



Ivan Lampret
02 9523 1333



13 Marsh Avenue, CRONULLA

DISCLAIMER: All care has been taken in preparing this floorplan, however the accuracy is not guaranteed and no liability will be accepted for any reliance placed upon it
 Produced by PRODUCT PHOTOGRAPHY STUDIO mob: 0414 697 215 email: mgphoto@people.net.au