



6/35 Caronia Avenue Woolooware NSW

3 2 1

Neatly presented throughout, this delightful 3 bedroom townhouse is quietly situated at the back of a small complex of only eight and boasts spacious light filled interiors plus a generous rear courtyard with sunny entertaining deck.

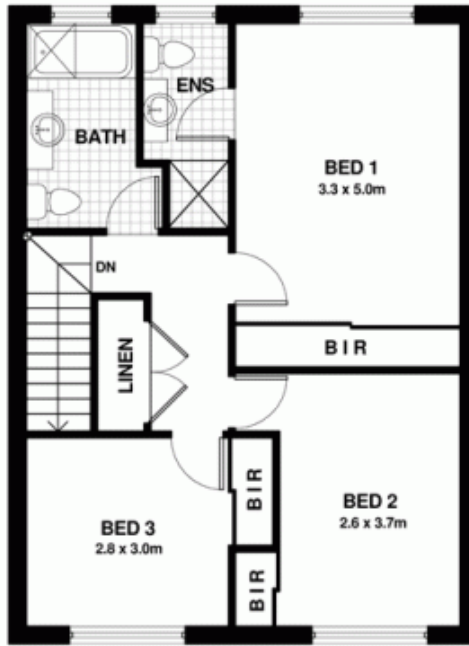
View : <https://www.gibsonpartners.com/sale/nsw/sutherland/woolooare/residential/townhouse/5853446>

Currently leased and well located within easy walking distance to Woolooware Station and only minutes to the vibrant hub of Cronulla, this property is ideal for both investors and home buyers alike.



Ivan Lampret
02 9523 1333

- * 3 bedrooms all with built-in robes (ensuite to main)
- * Full bathroom with separate bath and shower
- * Spacious, light-filled lounge and dining area
- * Open plan timber kitchen with dishwasher & breakfast bar
- * Sunny outdoor entertaining deck & paved courtyard



FIRST FLOOR



GROUND FLOOR

6/35 Caronia Avenue, WOOLLOOWARE

DISCLAIMER: All care has been taken in preparing this floor plan, however the accuracy is not guaranteed and no liability will be accepted for any reliance placed upon it

Produced by PRODUCT PHOTOGRAPHY STUDIO mob: 0414 697 215 email: mgphoto@people.net.au