



21 Glaisher Parade Cronulla NSW

5 2 2

Offered for the first time since 1969, this immaculately maintained and presented residence is prestigiously positioned in one of South Cronulla's most sought after locations boasting breathtaking views over Bass & Flinders Point across to Bundeena, Jibbon Point and beyond.

Land Size : 682.9 sqm

View : <https://www.gibsonpartners.com/sale/nsw/sutherland/cronulla/residential/house/5853413>

Currently offering plenty of accommodation, this light-filled character-filled home is ideal to move straight into yet also has tremendous further potential should you wish to reconfigure or extend to further benefit from its spacious floorplan, ideal aspect and substantial views.

- * Large level corner block of approx. 682.9sqm
- * Natural light-filled interiors throughout
- * 5 generous bedrooms all with built-in robes
- * Formal light-filled living room with gas heating

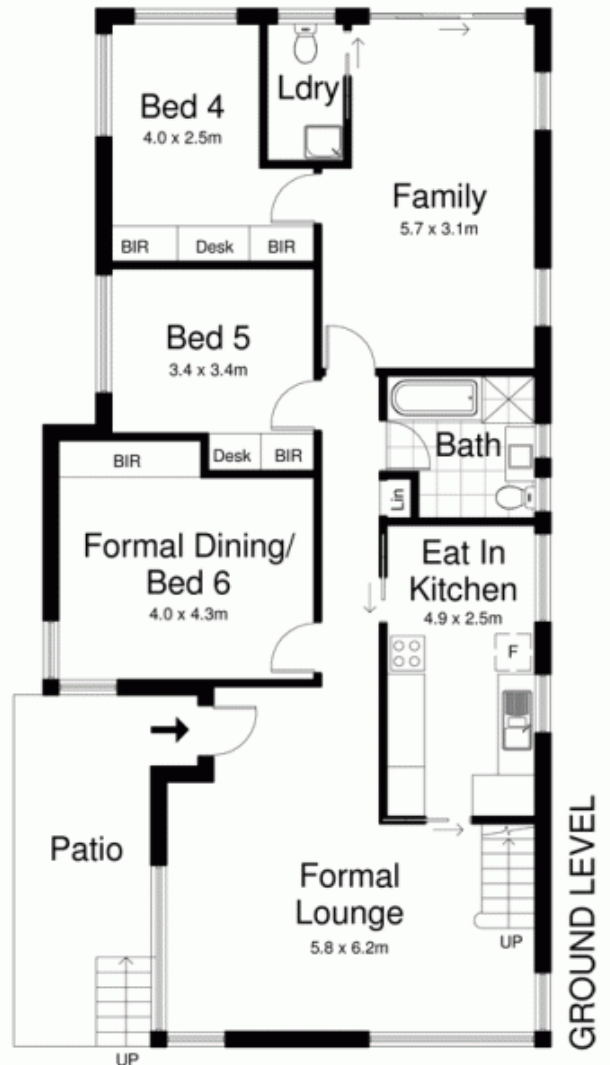
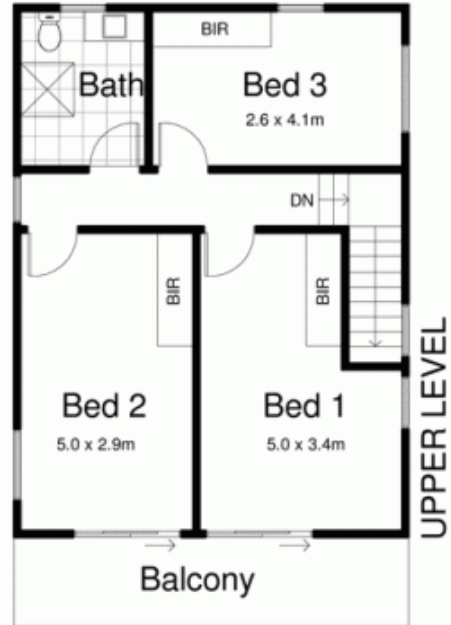
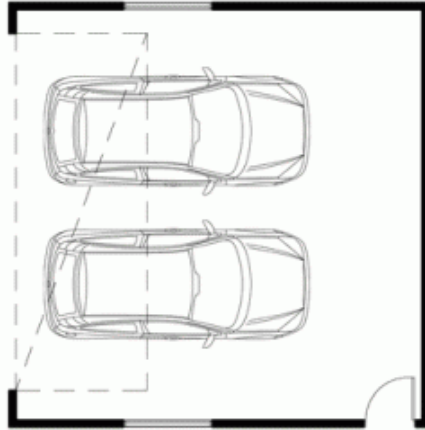


Ivan Lampret
02 9523 1333



Karla Madgwick
02 9523 1333

Garage
6.9 x 6.0m



21 Glasher Parade, CRONULLA SOUTH

DISCLAIMER: All care has been taken in preparing this floorplan, however the accuracy is not guaranteed and no liability will be accepted for any reliance placed upon it
Produced by PRODUCT PHOTOGRAPHY STUDIO mob: 0414 697 215 email: mgphoto@people.net.au