



1/13-15 Clyde Avenue Cronulla NSW

2 1 1

Tucked away in a quiet street of South Cronulla is this modernised 2 bedroom apartment that boasts a glorious north-easterly aspect and light-filled interiors.

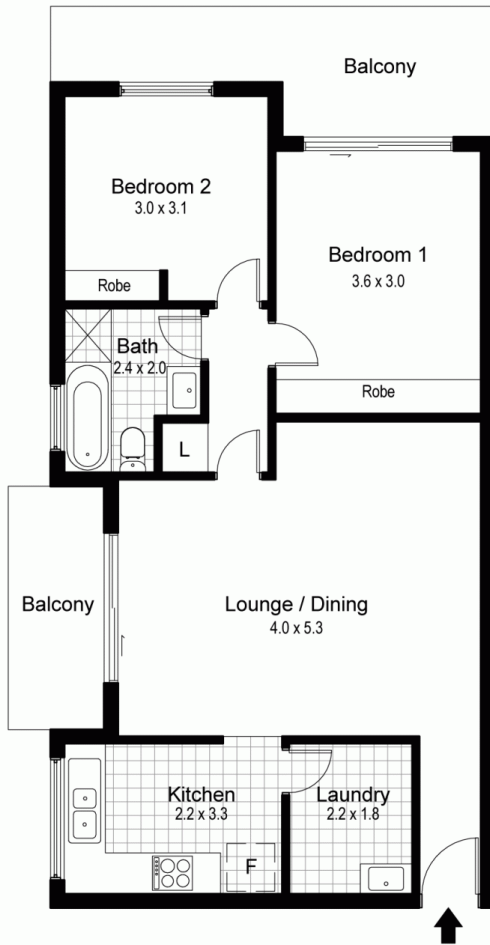
View : <https://www.gibsonpartners.com/sale/nsw/sutherland/cronulla/residential/apartment/5853375>

Situated on the first floor of a well maintained security building that is centrally located within walking distance to Gunnamatta Park & Bay, Cronulla Mall & train station, this property would make an ideal first home or investment.

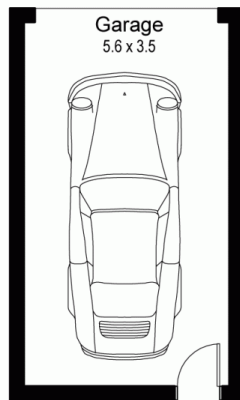
- * 2 good size bedrooms with built-in robes (main with own private balcony)
- * Modern kitchen with granite bench-tops
- * Spacious combined lounge/dining area
- * 2 sun-drenched balconies
- * Large internal laundry and updated bathroom
- * Remote lock-up garage with internal access



Ivan Lampret
02 9523 1333



Unit Floor Plan



Garage

Unit 1 / 13-15 Clyde Avenue, CRONULLA

