



28 George Street Yowie Bay NSW

3 2 1

Escape from today's hectic pace into the sublime waterside lifestyle of this unique tidal waterfront residence occupying a remarkably quiet setting over approx. 1509sqm along the Yowie Bay Peninsula.

An original 1930's cottage that has been renovated for enhanced comfort, this property still retains rich charm and character through the use of sandstock bricks and timber work that seamlessly integrate with nature and its tranquil surrounds.

Offering a relaxed lifestyle of unrivalled peace and privacy, this property is also conveniently located within walking distance to 'Post Box Cafe', Westfield Miranda, schools, and train station.

Land Size : 1509 sqm

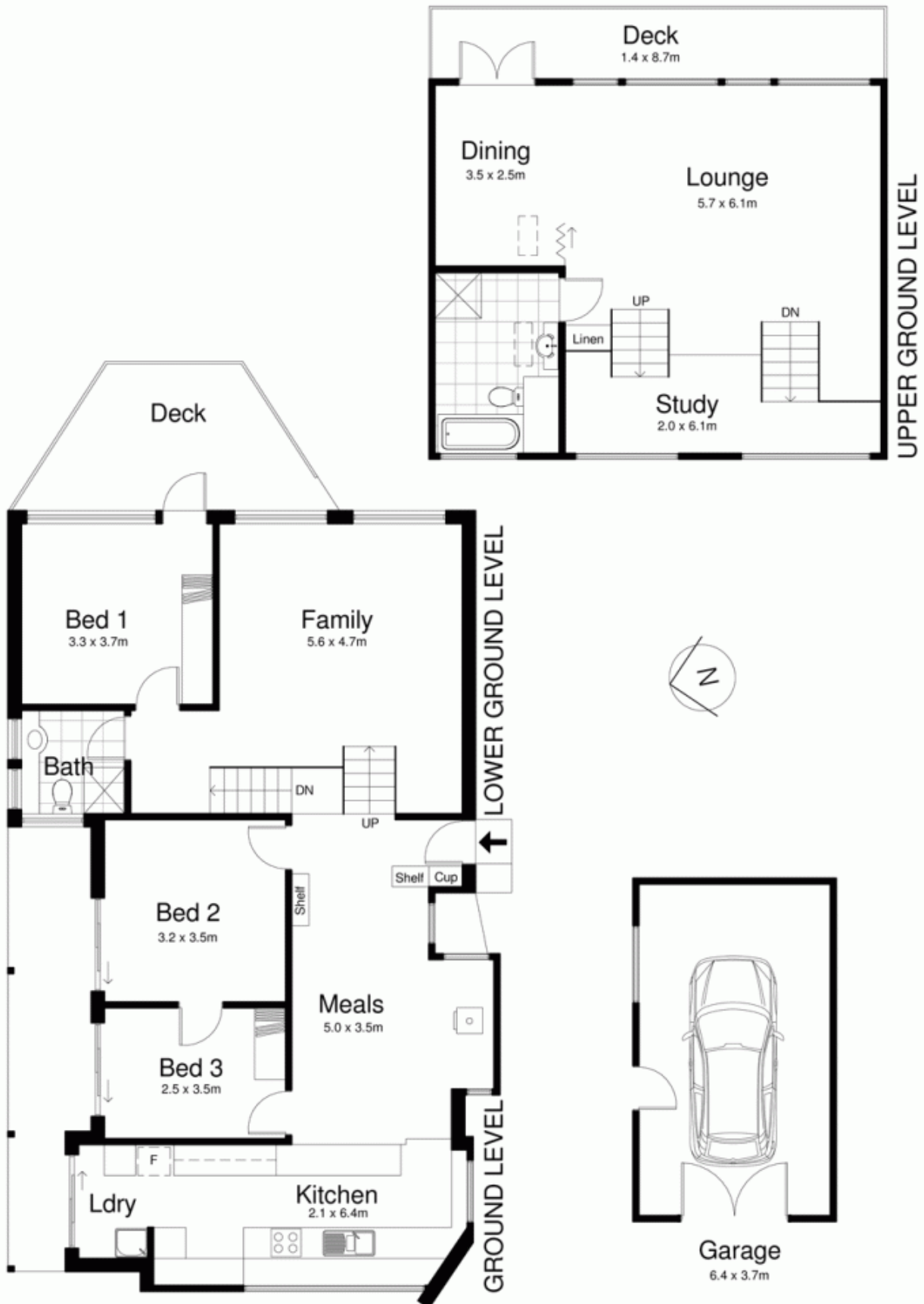
View : <https://www.gibsonpartners.com/sale/nsw/sutherland/yowie-bay/residential/house/5853334>



Ivan Lampret
02 9523 1333



Karla Madgwick
02 9523 1333



28 George Street, YOWIE BAY

DISCLAIMER: All care has been taken in preparing this floorplan, however the accuracy is not guaranteed and no liability will be accepted for any reliance placed upon it
 Produced by PRODUCT PHOTOGRAPHY STUDIO mob: 0414 697 215 email: mgphoto@people.net.au