



## 2/6 Elizabeth Place CRONULLA NSW

2 1 1

Looking for a fabulous investment offering an abundance of space & potential? Situated just footsteps from The Esplanade, beaches, Shelly Park, shops and transport; this unique two bedroom apartment offers an unbelievable lifestyle opportunity.

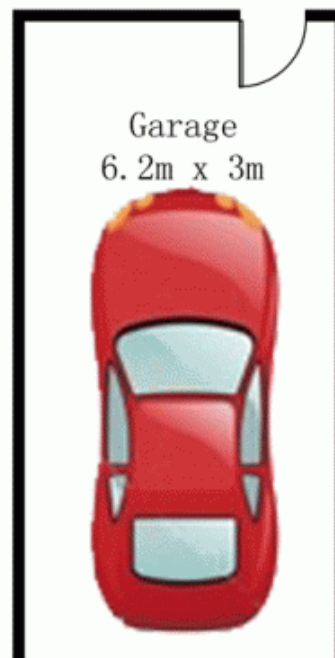
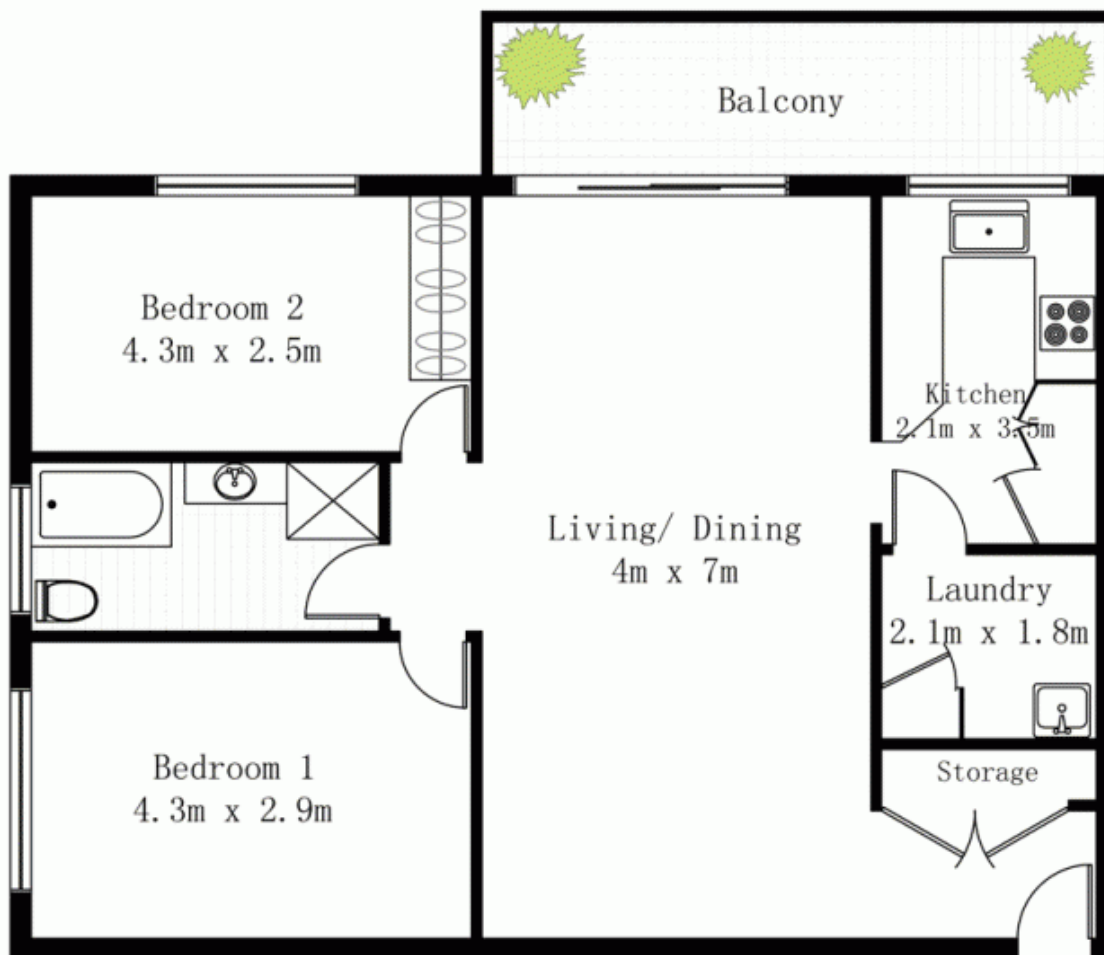
**View :** <https://www.gibsonpartners.com/sale/nsw/sutherland/cronulla/residential/apartment/5853224>

Positioned on the first floor of a well maintained security block with a private leafy outlook and some water peeps, this surprisingly spacious apartment is currently in immaculate condition yet offers exciting prospects for the astute investor or home buyer, to add their personal touch.



**Ivan Lampret**  
02 9523 1333

- \* 2 generous bedrooms, main with built-in robe
- \* Original bathroom with separate bath & shower
- \* Updated open plan kitchen with stainless steel appliances
- \* Surprisingly spacious lounge & dining area



## 2/6 Elizabeth Place, Cronulla

Disclaimer: All care has been taken in preparing this floor plan, however the accuracy is not guaranteed and no liability will be accepted for any reliance placed upon it.

Produced by PRODUCT PHOTOGRAPHY STUDIO. ph: 0414 697 215 e: mgphoto@people.net.au