



1 Teak Place MIRANDA NSW

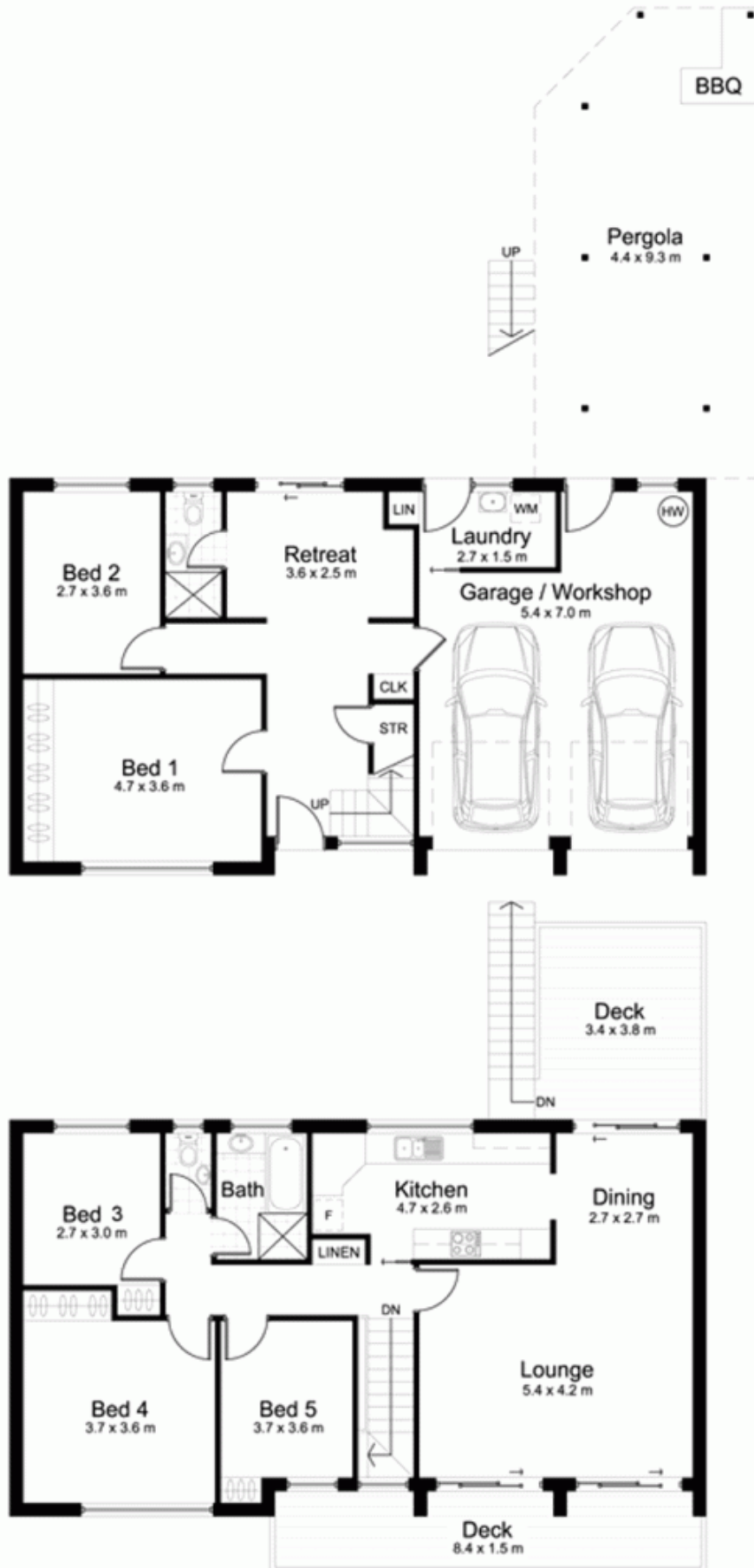
5 🏠 2 🚗 2 🚗

Jason Monk of Gibson Partners Real Estate PROUDLY MARKETS.....Set on a huge 973sqm north facing yard with a salt water, solar heated in-ground pool, this immaculate dual level brick home is an exceptional offering for relaxed family living and spacious entertaining.

View : <https://www.gibsonpartners.com/sale/nsw/sutherland/miranda/residential/house/5853221>

Positioned leafy cul-de-sac in a family-friendly enclave in a handy location close to schools, shops and transport overlooking Sylvania Waters Golf Course.

- * Flexible 5 bedroom floor plan to suit all family types
- * Peaceful family home occupying extensive level grounds
- * Lounge and dining rooms adjoining north facing terrace
- * Updated timber kitchen with fresh decor overlooking yard
- * Sunroom retreat opens to a solar heated, salt water in-ground pool and sun terrace



1 Teak Place, MIRANDA

DISCLAIMER: All care has been taken in preparing this floor plan, however the accuracy is not guaranteed and no liability will be accepted for any reliance placed upon it
 Produced by PRODUCT PHOTOGRAPHY STUDIO
 mob: 0414 697 215 email: mgphoto@people.net.au