



22 Anemone Place KIRRAWEE NSW

3 1 2

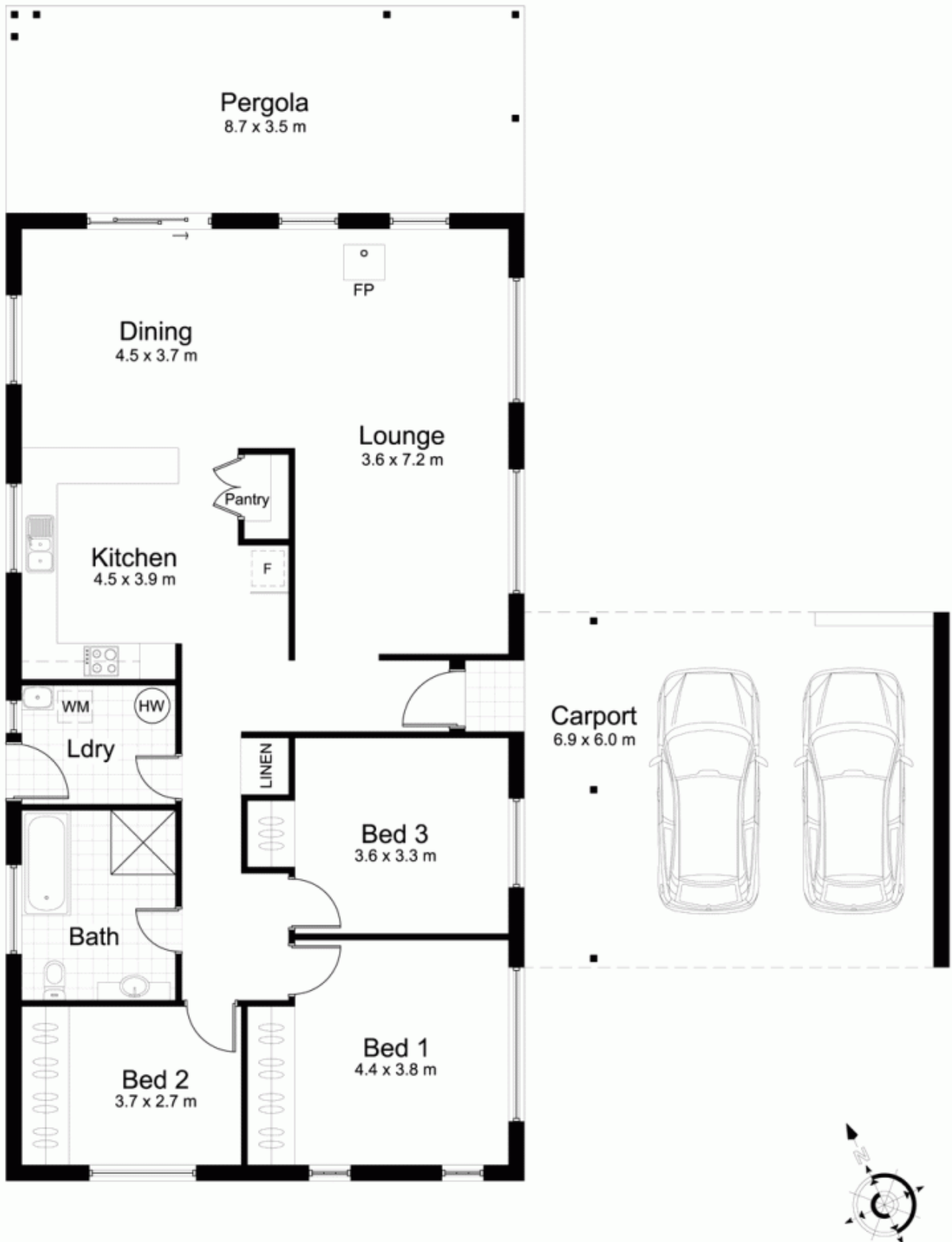
Jason Monk of Gibson Partners Real Estate PROUDLY MARKETS.....You will be amazed by this stunning single level brick home on the exclusive fringe of Kirrawee and Kareela.

View : <https://www.gibsonpartners.com/sale/nsw/sutherland/kirrawee/residential/house/5853212>

Situated in a private cul-de-sac with tranquil leafy outlook, all you have to do is simply relax and enjoy the stunning gardens and surrounds.

The flowing open plan layout lends itself to modern day living and also means that where ever you are you can keep an eye on the children.

The kitchen is great for the chef within, and the granite bench tops and appliances are of the highest quality. The open plan lounge and dining areas look magnificent and



**22 Anemone Place,
KAREELA**

DISCLAIMER: All care has been taken in preparing this floor plan, however the accuracy is not guaranteed and no liability will be accepted for any reliance placed upon it
 Produced by PRODUCT PHOTOGRAPHY STUDIO
 mob: 0414 697 215 email: mgphoto@people.net.au