



3 Homer Place DOLANS BAY NSW

5 3 2

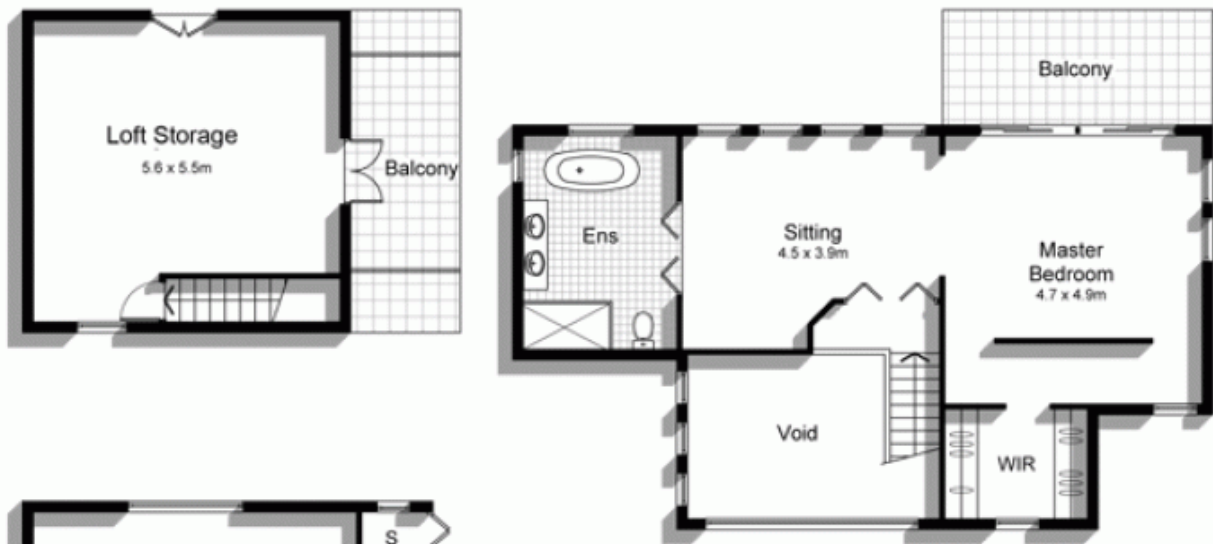
Perfect for those desiring a large block of land and a quiet cul-de-sac address, this exquisite contemporary residence showcases a clever and innovative design that preserves privacy while admitting northern sunlight and ventilation. Its open spaces provide a functional and versatile layout that integrates naturally with outdoor areas to create a home of enduring style and sophistication.

Offering an abundance of accommodation for all the family including a luxurious parent's retreat that occupies the entire top floor, the home also boasts 3 living areas, large level lawns for children to play, a resort-style in-ground pool and spa - all visible from the home's interiors - and a fabulous community based location with local shops, schools and transport only moments away.

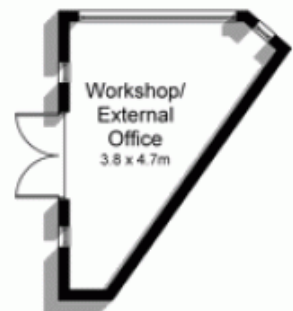
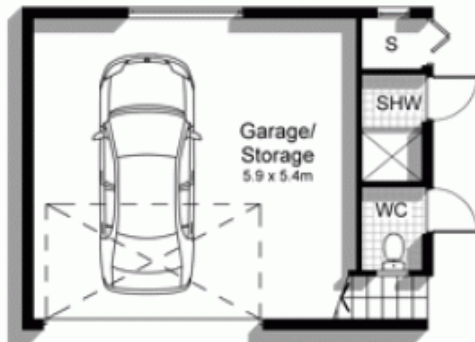
View : <https://www.gibsonpartners.com/sale/nsw/sutherland/dolans-bay/residential/house/5853204>



Ivan Lampret
02 9523 1333



First Floor



Ground Floor



**3 Homer Place
CARINGBAH SOUTH**

DISCLAIMER: All care has been taken in preparing this floor plan, however the accuracy is not guaranteed and no liability will be accepted for any reliance placed upon it
Produced by PRODUCT PHOTOGRAPHY STUDIO
mob: 0414 697 215 email: mgphoto@people.net.au