




15/7-11 Searl Road CRONULLA NSW

3  2  2 

Jason Monk of Gibson Partners PROUDLY MARKETS..... This 2 storey unique penthouse is commandingly positioned for panoramic portrait style views including the leafy neighbourhood, the Gunnamatta Bay, Cronulla Central Skyline and the National Park.

**Building Size** : 35 sqm  
**View** : <https://www.gibsonpartners.com/sale/nsw/sutherland/cronulla/residential/apartment/5853145>

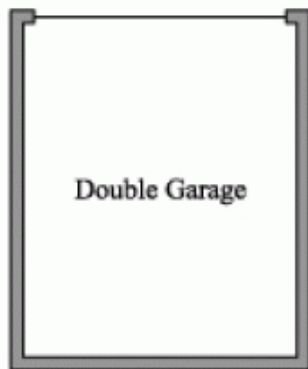
Crowning a desirably located modern architectural security building, this true penthouse style apartment offers a wow factor.

\* OWNERS COMMITTED ELSEWHERE - Pet Friendly Penthouse with Terrace

Incorporating bright sun drenched interiors, sophisticated indoor outdoor living including massive roof top terrace and double auto garage.

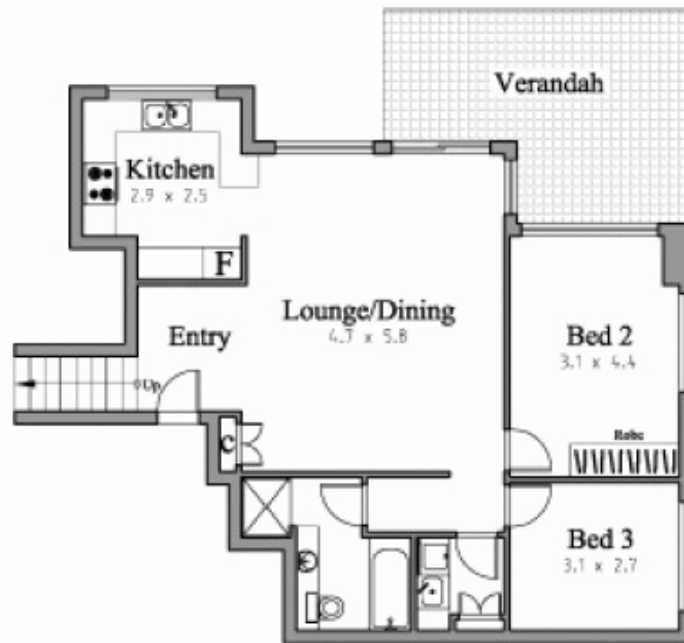
# Cronulla

15 / 7 - 11 Searl Road

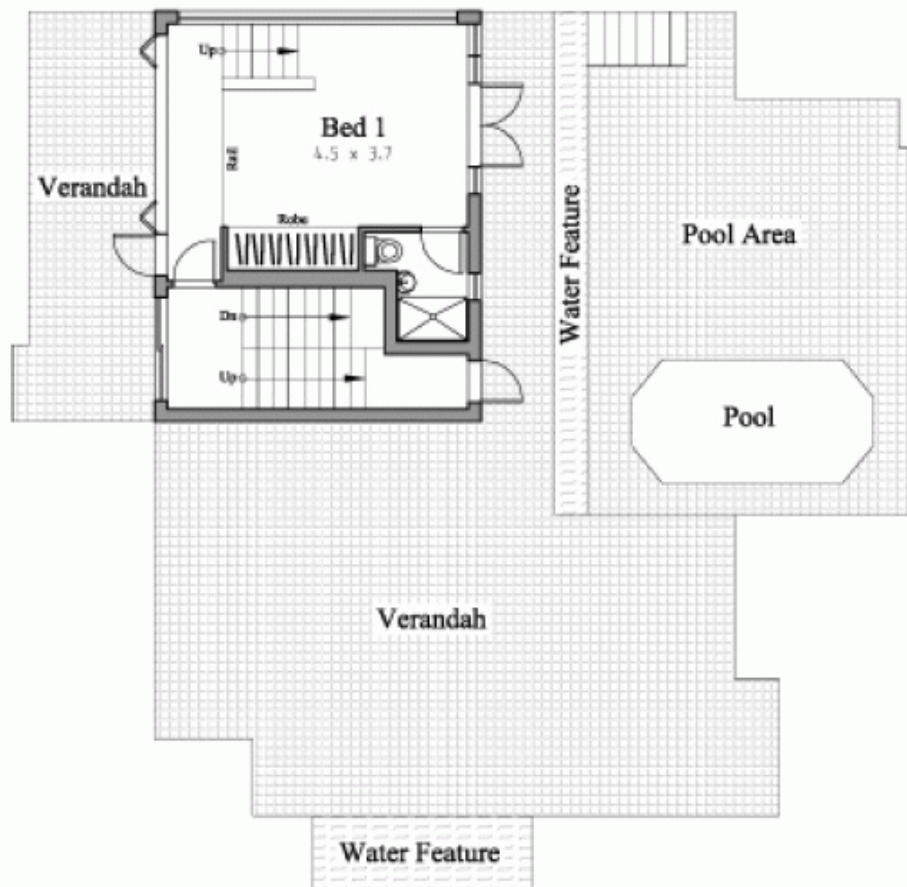


Double Garage

GROUND FLOOR



FIRST FLOOR



SECOND FLOOR