



CRONULLA

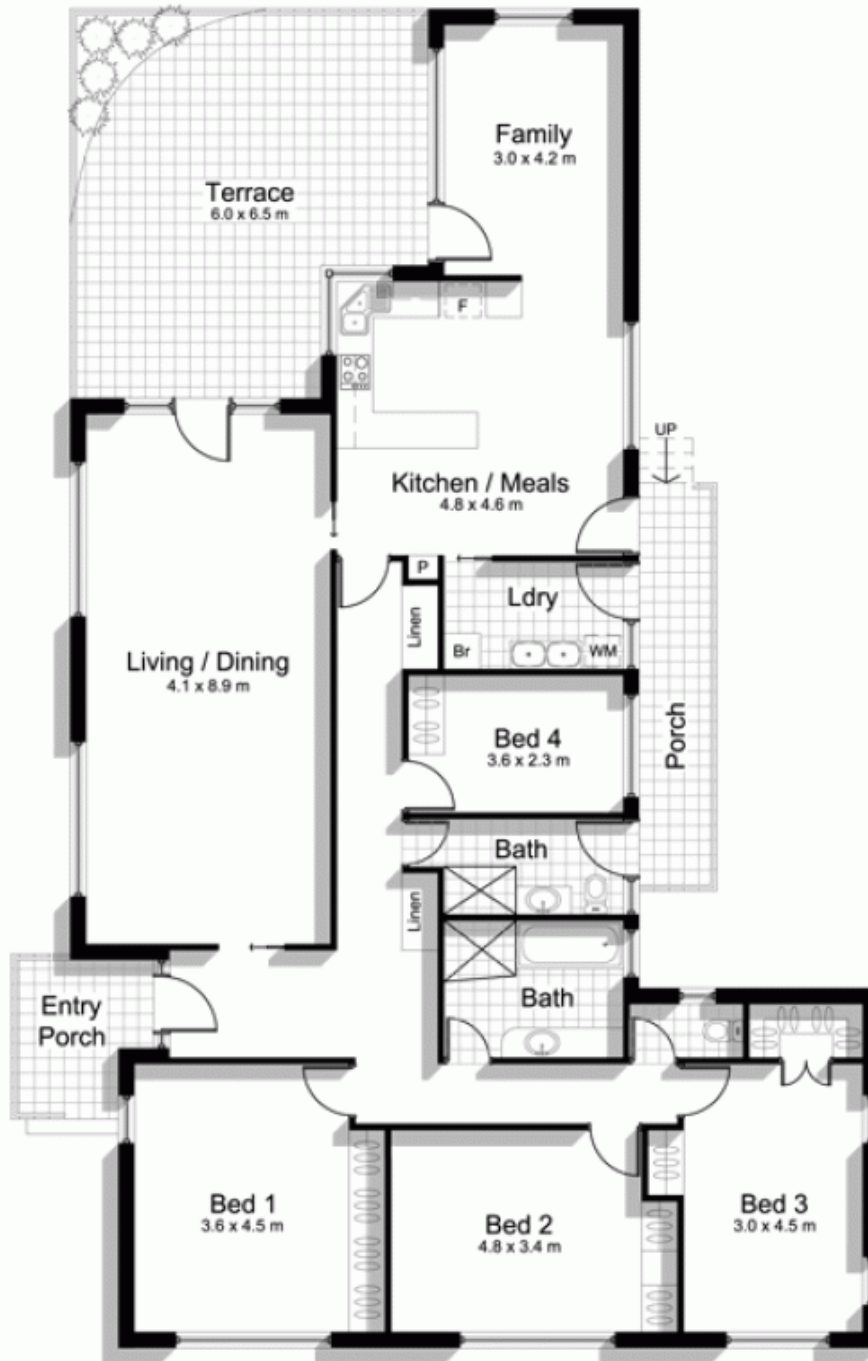
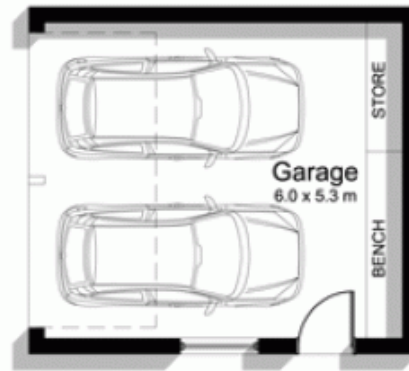
4 2 2

Jason Monk of Gibson Partners Real Estate PROUDLY MARKETSBeautifully maintained and presented this single level home is positioned on a perfect north facing block of approx 651sqm, possibly one of the highest points on the Burraneer Peninsular enjoying the beautiful easterly ocean breezes complimented by the warm winter sun to the west.

View : <https://www.gibsonpartners.com/sale/nsw/sutherland/cronulla/residential/house/5853141>

This fastidiously maintained home features an expansive living and entertaining area opening onto a year-round entertaining terrace and the lush, private garden beyond.

Single level properties in this tightly held street seldom come on the market, marking this unique opportunity for the locality conscious buyer.



212 Woolooware Road,
BURRANEER

DISCLAIMER: All care has been taken in preparing this floor plan, however the accuracy is not guaranteed and no liability will be accepted for any reliance placed upon it
Produced by PRODUCT PHOTOGRAPHY STUDIO
mob: 0414 697 215 email: mgphoto@people.net.au