



3/98 The Kingsway CRONULLA NSW

3 2 2

Situated in a boutique complex of only six, this modern 3 bedroom townhouse boasts a convenient locale with just minutes to Woolooware train station and a short leisurely stroll to Cronulla's cosmopolitan hub of cafes, shops and beaches.

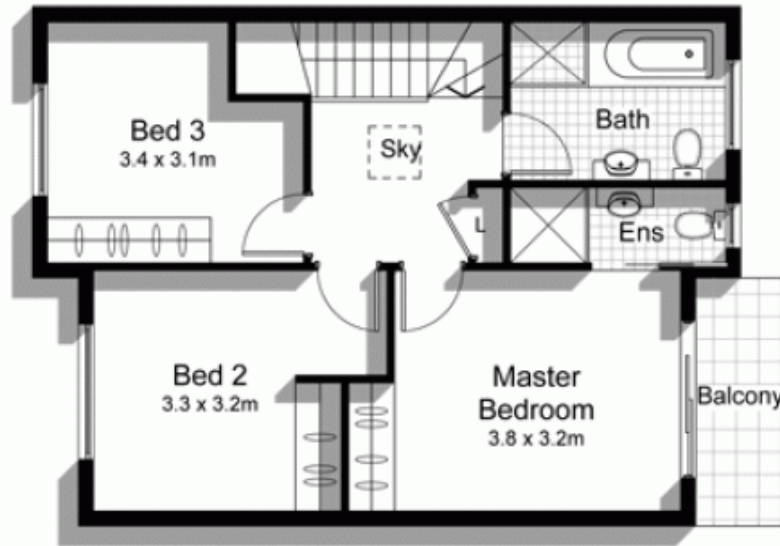
View : <https://www.gibsonpartners.com/sale/nsw/sutherland/cronulla/residential/townhouse/5853131>

Surrounded by landscaped gardens and suited to a young family or those seeking low maintenance living, this unique residence also features a spacious open plan layout, air-conditioning and a sunny rear courtyard ideal for those weekend BBQ's.

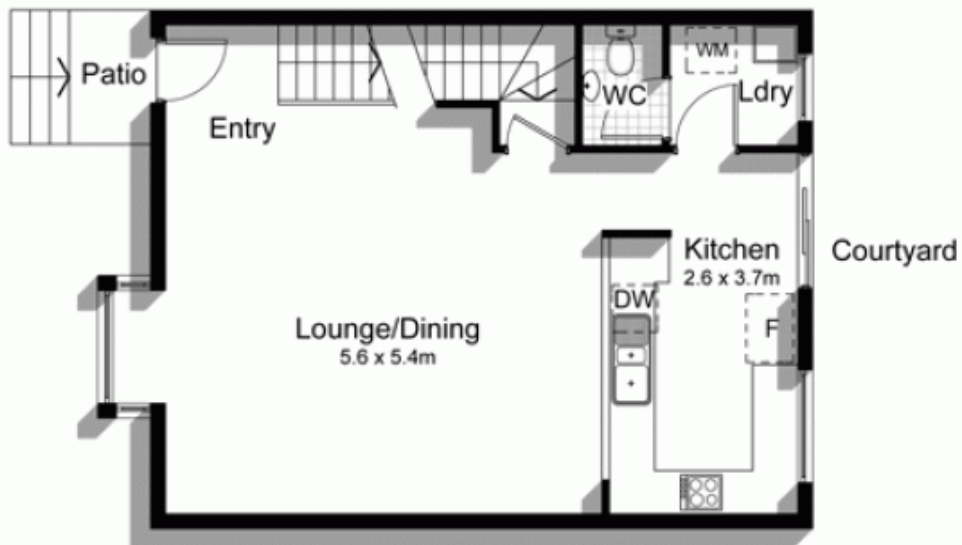


Ivan Lampret
02 9523 1333

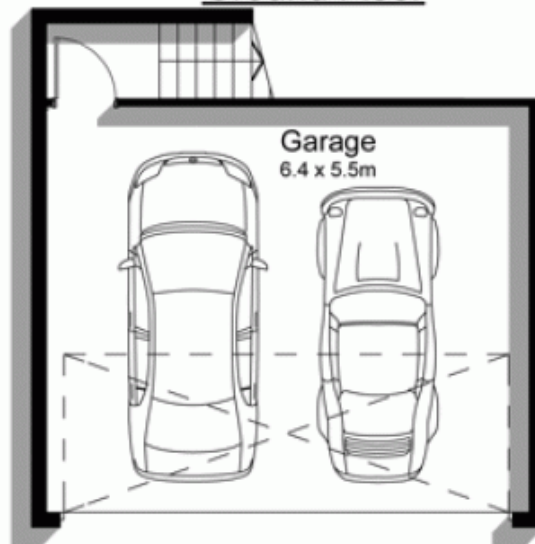
- * 3 generous bedrooms all with built-in robes
- * Main bedroom with ensuite and balcony
- * Modern bathroom plus internal laundry with 2nd toilet
- * Gourmet Caesar stone kitchen with stainless steel



First Floor



Ground Floor



Lower Ground Floor



3/98 The Kingsway
WOOLOOWARE

DISCLAIMER: All care has been taken in preparing this floor plan, however the accuracy is not guaranteed and no liability will be accepted for any reliance placed upon it
Produced by PRODUCT PHOTOGRAPHY STUDIO
mob: 0414 697 215 email: mgphoto@people.net.au