



314 President Avenue GYMEA NSW

2 1 1

Being offered for the first time in 63 years is this original yet immaculate family home featuring quality hardwood floors throughout & positioned on a generous corner block of approximately 670sqm.

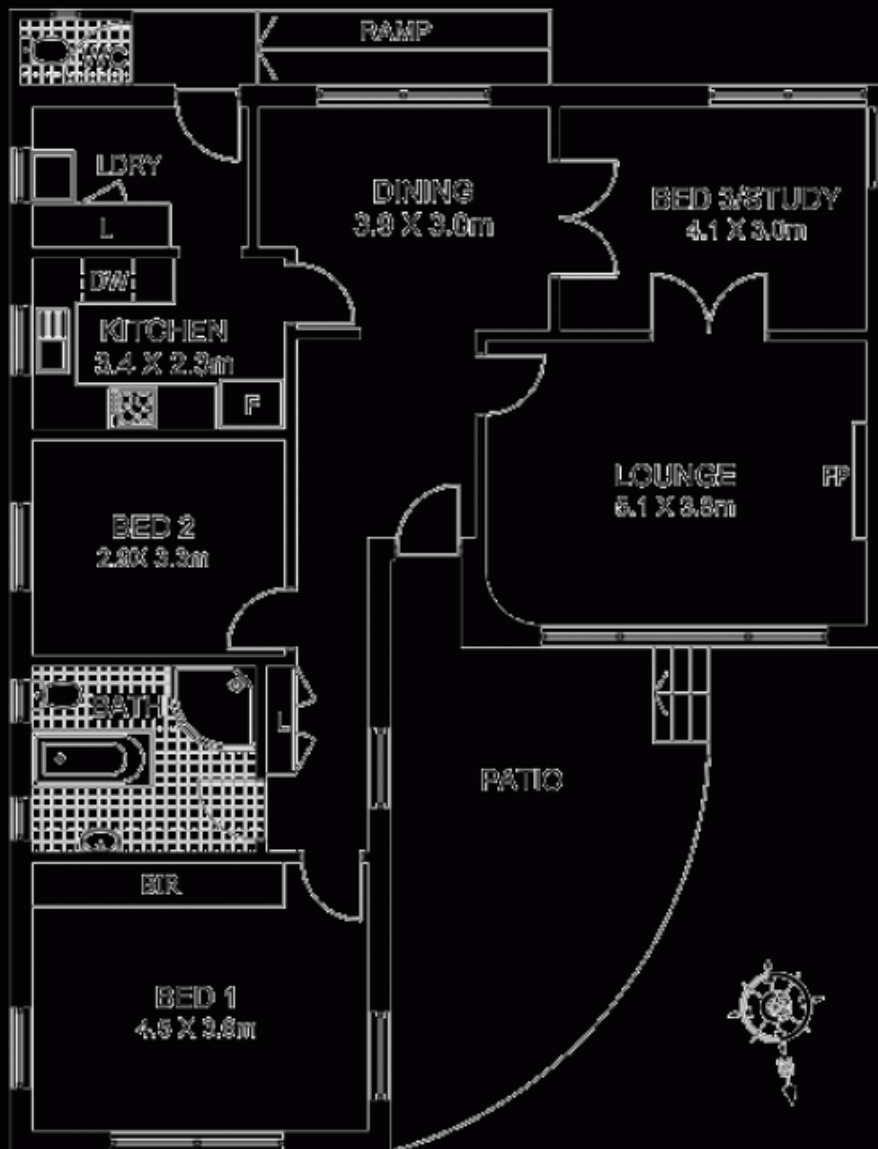
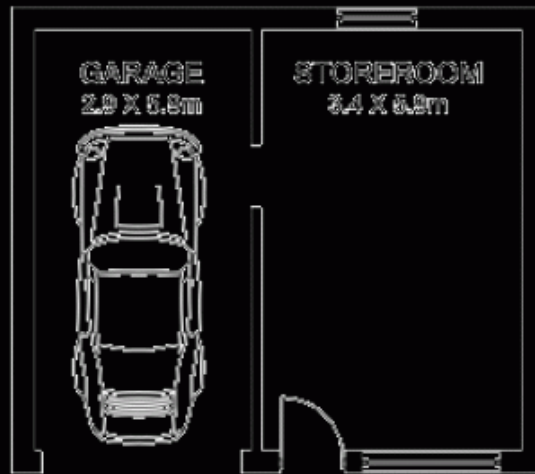
View : <https://www.gibsonpartners.com/sale/nsw/sutherland/gyMEA/residential/house/5853033>

Enjoying a sunny north aspect and retaining abundant character with its 9ft ceilings throughout, there is further scope to update and potentially reconfigure to further benefit from its spacious floor plan.

- * 2 generous bedrooms, main with built-in robe
- * Possible third bedroom, office or study
- * Formal living area with fireplace



Ivan Lampret
02 9523 1333



314 President Ave
GYMEA

DISCLAIMER: All care has been taken in preparing this floor plan, however the accuracy is not guaranteed and no liability will be accepted for any reliance placed upon it.
Produced by PRODUCT PHOTOGRAPHY STUDIO
mob: 0414 807 216 email: mgphoto@people.net.au