



1/245 Sylvania Road GYMEA NSW

3 2 1

Jason Monk of Gibson Partners Real Estate PROUDLY MARKETS.....Jason Monk of Gibson Partners Real Estate PROUDLY MARKETS.....North facing, Freshly painted and carpeted this bright and roomy townhouse is now available for immediate settlement.

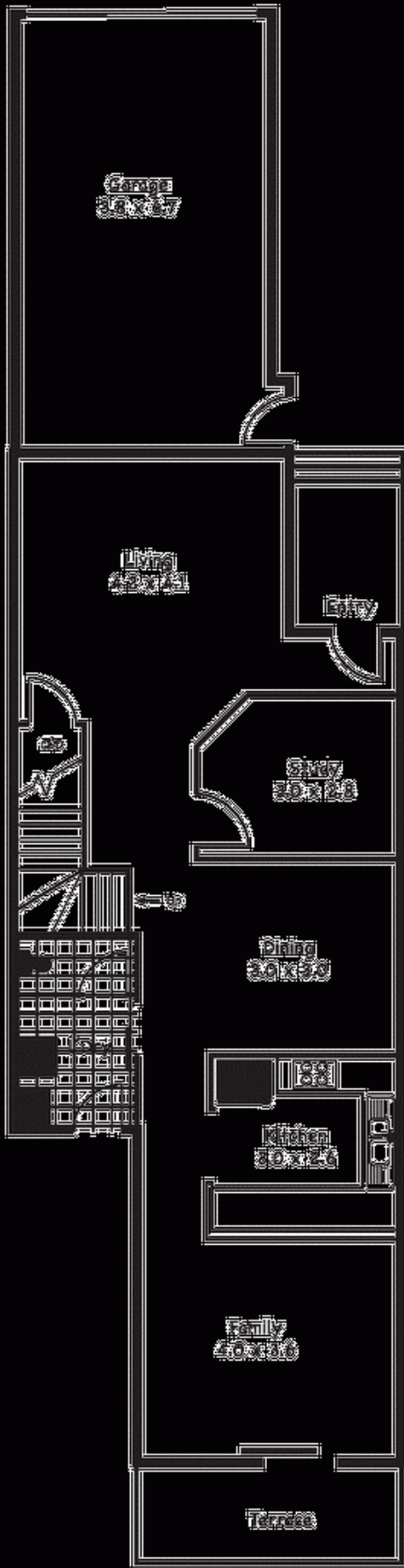
**Price** : \$ 680,000

**View** : <https://www.gibsonpartners.com/sale/nsw/sutherland/gyMEA/residential/townhouse/5852997>

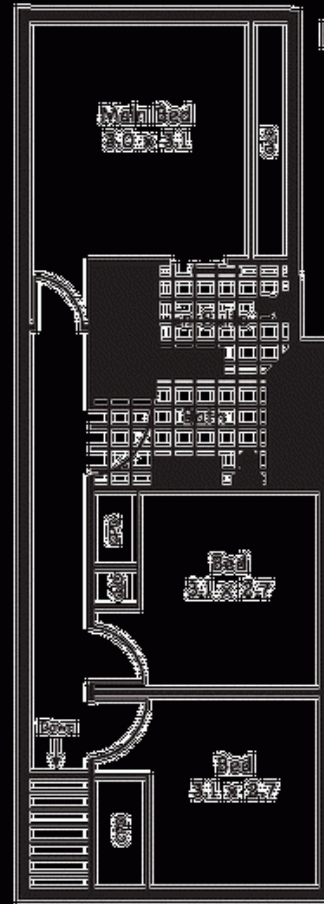
#### Features -

- \*3 bedrooms + study or 4th bedroom
- \*2 bathrooms plus 3rd toilet (inc ensuite)
- \*Formal lounge room + separate dining area
- \*Family room adjoining kitchen
- \*Internal laundry with access to the rear garden
- \*Single garage with 2nd parking space
- \*Sun-drenched north/west facing courtyard
- \*Located on the fringe of Gymea Bay

# 1/245 Sylvania Rd Miranda



Ground Floor



First Floor